

FEE EXEMPT

1 SCOTT S. SLATER (State Bar No. 117317)  
2 [sslater@bhfs.com](mailto:sslater@bhfs.com)  
3 BRADLEY J. HERREMA (State Bar No. 228976)  
4 [bherrema@bhfs.com](mailto:bherrema@bhfs.com)  
5 LAURA K. YRACEBURU (State Bar No. 333085)  
6 [lyraceburu@bhfs.com](mailto:lyraceburu@bhfs.com)  
7 BROWNSTEIN HYATT FARBER SCHRECK, LLP  
8 1021 Anacapa Street, 2nd Floor  
9 Santa Barbara, CA 93101-2102  
10 Telephone: 805.963.7000  
11 Facsimile: 805.965.4333

12 Attorneys for  
13 CHINO BASIN WATERMASTER

14 SUPERIOR COURT OF THE STATE OF CALIFORNIA

15 FOR THE COUNTY OF SAN BERNARDINO

16 CHINO BASIN MUNICIPAL WATER  
17 DISTRICT,

18 Plaintiff,

19 v.

20 CITY OF CHINO, ET AL.,

21 Defendants.

Case No. RCVRS51010

[Assigned for All Purposes to the  
Honorable Gilbert G. Ochoa]

**DECLARATION OF BRADLEY J.  
HERREMA IN SUPPORT OF MOTION  
FOR COURT TO RECEIVE AND FILE  
WATERMASTER SEMI-ANNUAL OBMP  
STATUS REPORT 2024-1**

Date: November 8, 2024  
Time: 9:00 a.m.  
Dept: R17

*[Notice of Motion and Motion for Court to  
Receive and File Watermaster Semi-Annual  
OBMP Status Report 2024-1; [Proposed] Order  
filed concurrently herewith]*

BROWNSTEIN HYATT FARBER SCHRECK, LLP  
1021 Anacapa Street, 2nd Floor  
Santa Barbara, CA 93101-2711

1  
2  
3  
4  
5  
6  
7  
8  
9  
10  
11  
12  
13  
14  
15  
16  
17  
18  
19  
20  
21  
22  
23  
24  
25  
26  
27  
28

**DECLARATION OF BRADLEY J. HERREMA**

I, Bradley J. Herrema, declare:

1. I am an attorney duly admitted to practice before all of the courts of this State, and am a shareholder in the law firm of Brownstein Hyatt Farber Schreck, LLP, counsel of record for Chino Basin Watermaster (“Watermaster”). I have personal knowledge of the facts stated in this declaration, except where stated on information and belief, and, if called as a witness, I could and would competently testify to them under oath. I make this declaration in support of the above-referenced request.

2. As legal counsel for Watermaster, I am familiar with Watermaster’s practices and procedures, as well as actions taken by the Pool Committees, Advisory Committee, and Watermaster Board.

3. At their respective meetings on September 12, 2024, the Overlying (Agricultural) Pool and the Appropriative Pool Committees unanimously recommended that the Advisory Committee recommend to the Watermaster Board to adopt the Semi-Annual OBMP Status Report 2024-1 (“Report”) and direct its filing with the Court. At its September 12, 2024 meeting, the Overlying (Non-Agricultural) Pool Committee unanimously recommended its representatives support adoption of the Report at the Advisory Committee and Watermaster Board meetings subject to changes they deem appropriate.

4. At its September 19, 2024 meeting, the Advisory Committee unanimously recommended the Watermaster Board adopt the Report and direct its filing with the Court.

5. At its regularly scheduled meeting on September 26, 2024, the Watermaster Board unanimously adopted the Report, a copy of which is attached hereto as **Exhibit A**, and directed its filing with the Court.

6. I am unaware of any opposition to the Court receiving and filing the Report.

//  
//  
//  
//

1  
2  
3  
4  
5  
6  
7  
8  
9  
10  
11  
12  
13  
14  
15  
16  
17  
18  
19  
20  
21  
22  
23  
24  
25  
26  
27  
28

I declare under penalty of perjury under the laws of the State of California that the foregoing is true and correct.

Dated this 9th day of October, 2024, at Santa Barbara, California.



BRADLEY J. HERREMA

**BROWNSTEIN HYATT FARBER SCHRECK, LLP**  
1021 Anacapa Street, 2nd Floor  
Santa Barbara, CA 93101-2711

# Exhibit A

# Optimum Basin Management Program

## Staff Status Report 2024-1: January to June 2024



### CHINO BASIN WATERMASTER

#### Highlighted Activities

- About 300 manual water level measurements from 35 private and 15 municipal supply wells were taken; two quarterly data downloads were conducted from 130 pressure transducers installed at various well sites; groundwater quality samples from three near river wells and four quarterly surface water quality samples from two sites were taken.
- Pursuant to the requirement of the Peace II Subsequent Environmental Impact Report (SEIR), Watermaster, the Inland Empire Utilities Agency (IEUA), and the Orange County Water District (OCWD) continued to implement the Prado Basin Habitat Sustainability Program (PBHSP). Watermaster conducted two quarterly downloads of pressure transducers at the 18 PBHSP monitoring wells and collections of water quality parameters at four sites; prepared the annual report for water year 2023; developed the PBHSP scope and budget for the fiscal year 2024/25; and conducted two meetings of the Prado Basin Habitat Sustainability Committee (PBHSC).
- Pursuant to the Chino Basin Subsidence Management Plan, Watermaster continued to implement the Ground-Level Monitoring Program (GLMP) for the MZ-1 and Northwest MZ-1 areas. Watermaster collected, processed, and checked groundwater level data and aquifer-system deformation data from the Ayala Park, Chino Creek, and Pomona extensometer facilities, and groundwater production data from wells in Northwest MZ-1; continued high-resolution water-level monitoring at about 30 wells within the MZ-1 Managed Area and the Areas of Subsidence Concern; conducted Spring-2024 ground-elevation surveys at established benchmarks across the Managed Area and Northwest MZ-1 Area; performed InSAR analyses of vertical ground motion across all Areas of Subsidence Concern for the periods 2022-23 and 2023-24; and prepared the draft and final technical memoranda on the Recommended Scope and Budget for the GLMP for FY 2024/25.
- Watermaster finalized the 1D Model Simulation of Subsidence in Northwest MZ-1— Subsidence Management Alternative #1, which included a recommend “Northwest MZ-1 Guidance Level” to slow down rates of compaction and subsidence in Northwest MZ-1 area; began work on constructing and calibrating the new 1D Models and published draft and final Technical Memoranda on Proposed Locations and Data for Construction and Calibration of Additional 1D Models.
- Watermaster and the IEUA continued to implement the 2013 Amendment to the 2010 Recharge Master Plan Update (2013 RMPU). Construction of the Wineville/Jurupa/RP3 and Lower Day projects continued, and the Lower Day project is substantially complete. The agreements for the Montclair Basins were obtained in preparation for the start of construction; the updated project completion date is fall 2025. Watermaster and the IEUA recharged a total of 24,509 acre-feet of water: 11,482 acre-feet of stormwater, 4,961 acre-feet of recycled water, and 8,066 acre-feet of imported water.
- Watermaster and the IEUA continued to implement the Maximum Benefit Salt and Nutrient Management Plan and provide support to the Santa Ana Water Board staff on the Basin Plan amendment to update the commitments and requirements for the Maximum Benefit Salt and Nutrient Management Plan.
- Watermaster continued to implement elements of the 2017 Court Order, including the continuation of the annual data collection and evaluation process covering the period through fiscal year 2022/23, and the continuation of the process to reevaluate the Safe Yield of the Chino Basin for the period of fiscal year 2021 through 2030.
- In February 2024, IEUA certified the final SEIR to support decision-making, investment, and grant applications for ongoing and new management actions under the Optimum Basin Management Program (OBMP).
- Two new management activities in the 2020 OBMP Update began in fiscal year 2023/24: (i) development of a Storage and Recovery Master Plan (SRMP); and (ii) preparation of a Water Quality Management Program (WQMP).
- Watermaster and its stakeholders conducted two Water Quality Committee meetings in which meeting attendees were asked to provide feedback on the Emerging Contaminants Monitoring Plan (ECMP), and a framework and scope for a WQMP.

#### Important Court Hearings and Orders

- **FEBRUARY 2, 2024:**  
HEARING AND ORDER GRANTING WATERMASTER'S MOTION FOR COURT TO: 1) RECEIVE AND FILE THE 2022/2023 ANNUAL REPORT OF THE GROUND-LEVEL MONITORING COMMITTEE; 2) RE-APPOINT NINE-MEMBER WATERMASTER BOARD
- **MAY 31, 2024:**  
HEARING AND ORDER GRANTING WATERMASTER'S MOTION FOR COURT TO: 1) RECEIVE AND FILE 46TH ANNUAL REPORT; 2) RECEIVE AND FILE WATERMASTER SEMI-ANNUAL OBMP STATUS REPORT 2023-2

# Optimum Basin Management Program

## Program Element 1: Develop and Implement a Comprehensive Monitoring Program

Fundamental to the implementation of the OBMP Program Elements are the monitoring and data collection efforts performed in accordance with Program Element 1, including monitoring basin hydrology, production, recharge, groundwater levels, groundwater quality, and ground-level movement. Various monitoring programs have and will continue to be refined over time to satisfy the evolving needs of Watermaster and the IEUA, such as new regulatory requirements and improved data coverage. Monitoring is performed by basin pumpers, Watermaster staff, and other cooperating entities as follows.

### Groundwater Level Monitoring

Watermaster's basin-wide groundwater-level monitoring program supports the periodic reassessment of Safe Yield, the monitoring and management of ground-level movement, the impact analysis of desalter pumping on private wells, the impact analysis of the implementation of the Peace II Agreement on groundwater levels and riparian vegetation in the Prado Basin, the triennial re-computation of ambient water quality mandated by the Water Quality Control Plan for the Santa Ana River Basin (Basin Plan), and the assessment of Hydraulic Control—a maximum-benefit commitment in the Basin Plan. The data are also used to update and recalibrate Watermaster's computer-simulated groundwater flow model in order to assess groundwater flow directions, to compute storage changes, to support interpretations of water quality data, and to identify areas of the basin where recharge and discharge are not in balance.



WM Staff Taking a Groundwater Level Measurement

The current groundwater-level monitoring program is comprised of approximately 1,150 wells. At about 960 of these wells, groundwater levels are measured by well owners, which include municipal water agencies, the California Department of Toxic Substances Control (DTSC), the Counties, and various private consulting firms. Watermaster collects these groundwater level data semi-annually from the well owners. At the remaining 190 wells, groundwater levels are measured monthly by Watermaster staff using manual methods or by pressure transducers that record data on a 15-minute interval. These wells are mainly Agricultural Pool wells or dedicated monitoring wells located south of the 60 freeway.

All groundwater-level data are checked and uploaded to a centralized database management system that can be accessed online through HydroDaVE<sup>SM</sup>. During this reporting period, Watermaster measured approximately 300 groundwater levels at about 35 private wells and 15 municipal supply wells throughout the Chino Basin and conducted two quarterly downloads of 130 pressure transducers installed in private, municipal, and monitoring wells. Additionally, Watermaster compiled all available groundwater-level data from well owners in the basin for the October 2023 to March 2024 period.

### Groundwater Quality Monitoring

Watermaster initiated a comprehensive groundwater-quality monitoring program in which the obtained data may be used for: the biennial *Chino Basin OBMP State of the Basin* report, the triennial re-computation of ambient water quality, the demonstration of Hydraulic Control, monitoring of nonpoint-source groundwater contamination and plumes associated with point-source contamination, and assessing the overall health of the groundwater basin. Groundwater-quality data are also used in conjunction with numerical models to assist Watermaster and other parties in evaluating proposed salinity management and groundwater remediation strategies. The details of the groundwater-quality monitoring programs as of fiscal year 2023/24 are described below.

**Chino Basin Data Collection (CBDC).** Watermaster routinely and proactively collects groundwater-quality data from well owners including municipal and governmental agencies. Groundwater quality data are also obtained from special studies and monitoring required by orders of the Santa Ana Regional Water Quality Control Board (Santa Ana Water Board)—such as for landfills and other groundwater quality investigations, the DTSC, the US Geological Survey (USGS), and others. These data are collected semi-annually from well owners and monitoring entities. Data are collected for approximately 860 wells as part of the CBDC program. During this reporting period, Watermaster compiled data collected for the CBDC program for the July to December 2023 period.

**Watermaster Field Groundwater Quality Monitoring Programs.** Watermaster monitors groundwater quality at privately owned wells and dedicated monitoring wells on a routine basis as follows:

1. **Private Wells.** About 65 private wells, located predominantly in the southern portion of the basin, are sampled at various frequencies based on their proximity to known point-source contamination plumes. Seven wells near contaminant plumes are sampled annually, and the remaining 58 wells are sampled triennially.

# Optimum Basin Management Program

## Program Element 1: Develop and Implement a Comprehensive Monitoring Program (Continued)

2. *Watermaster Monitoring Wells.* Watermaster collects groundwater-quality samples from a total of 49 multi-nested monitoring wells at 21 well sites located throughout the Chino Basin. These monitoring well sites include: nine HCMP sites constructed to support the demonstration of Hydraulic Control in the southern Chino Basin, nine sites constructed to support the PBHSP in the Prado Basin region, and three sites that fill spatial data gaps near contamination plumes in MZ-3. Each nested well site contains up to four wells in the borehole. Additionally, Watermaster samples one single-casing well in MZ-3. Currently, the HCMP MZ-3, and Kaiser monitoring wells are sampled annually, and the PBHSP wells are sampled triennially.
3. *Other Wells.* Watermaster collects quarterly samples from three near-river wells to characterize the interaction of the Santa Ana River and groundwater. These shallow wells along the Santa Ana River consist of two former USGS National Water Quality Assessment Program wells (Archibald 1 and Archibald 2) and one Santa Ana River Water Company (SARWC) well (active Well 9). Until early 2023, there was a fourth near-river well, SARWC well 10, that was part of this monitoring program. SARWC well 10 is no longer able to be sampled because it is an old well that has deteriorated and filled in.

During this reporting period, Watermaster collected quarterly groundwater quality samples from three near river wells. All groundwater quality data are checked by Watermaster staff and uploaded to a centralized database management system that can be accessed online through HydroDaVE<sup>SM</sup>.

### Groundwater Production Monitoring

As of the end of this reporting period, there were a total of 427 producing wells, 228 of which were for agricultural uses. The number of agricultural wells has been decreasing in recent years due to urbanization and development. Many of the remaining active agricultural production wells are metered, and Watermaster reads the meters on a quarterly basis. Meter reads and production data are then entered into Watermaster's relational database, which can be accessed online through HydroDaVE<sup>SM</sup>.

### Surface Water Monitoring in the Santa Ana River

Watermaster collects grab water quality samples at two sites along the Santa Ana River (Santa Ana River at River Road and Santa Ana River at Etiwanda) on a quarterly basis. Sample data from these surface water sites and from the near-river wells are used to characterize the interaction between the Santa Ana River and nearby groundwater. During this reporting period, Watermaster collected four quarterly surface water-quality samples from the two surface water sites.



Meter Vendor Testing a Well's Inline Meter for Accuracy

### Prado Basin Habitat Sustainability Program (PBHSP)

Mitigation Measure 4.4-3 from the Peace II SEIR requires that Watermaster and the IEUA, in collaboration with the OCWD, form a committee, the Prado Basin Habitat Sustainability Committee, to develop and implement an Adaptive Management Plan for the PBHSP. The PBHSC is open to all interested participants, including the Watermaster Parties, IEUA member agencies, the OCWD, and other interested stakeholders. The objective of the PBHSP is to ensure that riparian habitat in the Prado Basin is not adversely impacted by the implementation of Peace II activities. Currently, the PBHSP consists of a monitoring program and the annual reporting on its results. The monitoring program includes an assessment of the riparian habitat and factors that could potentially impact the riparian habitat, including those factors affected by Peace II activities such as changes in groundwater levels. Sixteen monitoring wells at nine sites were constructed in 2015 to support the PBHSP. Two existing wells are also monitored as part of the PBHSP. The PBHSC developed the Adaptive Management Plan of the PBHSP to describe an initial monitoring program and a process to modify the monitoring program and/or implement mitigation strategies, as necessary.

During this reporting period, Watermaster performed the following tasks:

- Conducted the groundwater monitoring program, which included quarterly downloads in March and June 2024 of transducers that measure groundwater levels and temperature at eight PBHSP monitoring wells, and transducers that measure electrical conductivity (EC), temperature, and groundwater levels at ten PBHSP monitoring wells.

# Optimum Basin Management Program

## Program Element 1: Develop and Implement a Comprehensive Monitoring Program (Continued)

- Conducted the surface-water monitoring program at four surface water sites, which included quarterly collection of field parameters for EC and temperature in March and June 2024.
- Prepared a memorandum titled: "Recommended Scope and Budget of the Prado Basin Habitat Sustainability Program for Fiscal Year 2024/25". This memorandum was used by Watermaster and the IEUA to develop and approve their respective fiscal year 2024/25 budgets.
- Prepared the eighth annual report: *Annual Report of the Prado Basin Habitat Sustainability Program for Water Year 2023*. The main conclusion of the annual report was that the quality of the riparian habitat remained stable or increased across most of the Prado Basin from 2022-2023 and at the same time there was above average precipitation and stream discharge conditions. Groundwater levels have changed throughout most of the study area by up to +/- 5 feet, and the notable declines of about nine feet near the top of Mill Creek have come back up in 2023 (by four feet). No mitigation measures are proposed at this time.
- Conducted two meetings of the PBHSC:
  - On March 21, 2024 to present the Recommended Scope and Budget of the PBHSP for fiscal year 2024/25.
  - On May 8, 2024 to present the draft Annual Report of the PBHSP for water year 2023.

### Chino Basin Groundwater Recharge Monitoring Program

Watermaster, the IEUA, the Chino Basin Water Conservation District, and the San Bernardino County Flood Control District jointly sponsor the Chino Basin Groundwater Recharge Program. This is a comprehensive water supply program to enhance water supply reliability and improve groundwater quality in local drinking water wells by increasing the recharge of storm, imported, and recycled waters. The recharge program is regulated under the IEUA and Watermaster's recycled water recharge permit— Santa Ana Water Board Order No. R8-2007-0039 and Monitoring and Reporting Program No. R8-2007-0039.

Watermaster and the IEUA measure the quantity of storm, imported, and recycled water that enters recharge basins using pressure transducers or staff gauges. The IEUA also conducts water-quality monitoring for all required parameters in Order No. R8-2007-0039 for recycled water, diluent water (storm water, dry-weather flow, and imported water), and groundwater. The IEUA staff samples for recycled water quality data: daily and weekly for the RP-1 and RP-4 effluent; quarterly and annually at two recycled water locations representative of recharge quality; and monthly from lysimeters at recharge basins. Most of the recycled water recharge basins have alternative compliance plans for total organic carbon (TOC) and total nitrogen (TN) using the results from the recycled water samples and the application of a correction factor for soil aquifer treatment. The IEUA also collects samples at about 15 surface water locations for stormwater and dry-weather flows. Imported water quality data for State Water Project water are obtained from the Metropolitan Water District of Southern California (MWDSC). The flow and quality data is used to calculate: 120-month blended water quality for total dissolved solids (TDS) and nitrate of all recharge sources in each recharge basin to assess adequate dilution of recycled water as required by the Division of Drinking Water (DDW); and 5-year blended water quality for TDS and nitrate for all recharge sources in all recharge basins in the Chino Basin as required by the Maximum Benefit Salinity Management Plan (see the Program Element 7 update in this status report).



Storm Water Captured in San Sevaine Basins

The IEUA also collects quarterly and annual groundwater quality samples at a network of about 35 dedicated monitoring wells and production wells that are downgradient of the recharge basins.

**Monitoring Activities.** During this reporting period, the IEUA performed its ongoing monitoring program to measure and record recharge volumes and to collect water quality samples for recycled water, diluent water, and groundwater pursuant to IEUA and Watermaster's permit requirements. This included collecting approximately 110 recycled water quality samples, 2 lysimeter samples, 7 diluent water quality samples, and 72 groundwater quality samples for analytical analyses. Daily composite water quality data was also collected at the RP-1 and RP-4 effluent.



# Optimum Basin Management Program

---

## Program Element 1: Develop and Implement a Comprehensive Monitoring Program (Continued)

**Reporting.** Watermaster and the IEUA completed the following compliance reports concerning the recharge program during this reporting period:

- 4Q-2023 Quarterly Report, which was submitted to the Santa Ana Water Board on February 15, 2024
- 1Q-2024 Quarterly Report, which was submitted to the Santa Ana Water Board on May 15, 2024

### Ground Level Monitoring

To address the historical occurrence of land subsidence and ground fissuring in the Chino Basin, Watermaster prepared and submitted a subsidence management plan (known as the MZ-1 Plan) to the Court for approval and in November 2007, the Court ordered its implementation (see Program Element 4 in this report for more on MZ-1 Plan implementation). The MZ-1 Plan required several monitoring and mitigation measures to minimize or abate the future occurrence of land subsidence and ground fissuring. These measures and activities included:

- Continuing the scope and frequency of monitoring within the so-called Managed Area that was conducted during the period when the MZ-1 Plan was being developed.
- Expanding the monitoring of the aquifer system and ground-level movement into other areas of MZ-1 and the Chino Basin where data indicate concern for future subsidence and ground fissuring (Areas of Subsidence Concern).
- Monitoring of horizontal strain across the historical zone of ground fissuring.
- Conducting additional testing and monitoring to refine the MZ-1 Guidance Criteria for subsidence management (e.g., the Long-Term Pumping Test).
- Developing alternative pumping plans for the MZ-1 producers impacted by the MZ-1 Plan.
- Constructing and testing a lower-cost cable extensometer facility at Ayala Park.
- Evaluating and comparing ground-level surveying and Interferometric Synthetic Aperture Radar (InSAR) and recommending future monitoring protocols for both techniques.
- Conducting an aquifer storage recovery (ASR) feasibility study at a City of Chino Hills production well (Well 16) within the MZ-1 Managed Area.

Since the initial MZ-1 Plan was adopted in 2007, Watermaster has conducted the Ground-Level Monitoring Program. The main results from the GLMP show that very little permanent land subsidence has occurred in the MZ-1 Managed Area, indicating that subsidence is being successfully managed in this area, but land subsidence has been occurring in Northwest MZ-1. One concern is that land subsidence in Northwest MZ-1 has occurred differentially across the San Jose Fault, following the same pattern of differential subsidence that occurred in the MZ-1 Managed Area during the time of ground fissuring.

Based on these observations, Watermaster determined that the subsidence management plan needed to be updated to include a Subsidence Management Plan for Northwest MZ-1, with the long-term objective of minimizing or abating the occurrence of the differential land subsidence. Thus, Watermaster expanded the GLMP into Northwest MZ-1 and prepared an updated Chino Basin Subsidence Management Plan, which included the Work Plan to Develop a Subsidence Management Plan for Northwest MZ-1 (Work Plan) as an appendix.

During this reporting period, Watermaster undertook the following Chino Basin Subsidence Management Plan activities:

- Continued high-resolution water-level monitoring at approximately 30 wells within the MZ-1 Managed Area and within the Areas of Subsidence Concern. All monitoring equipment was inspected at least quarterly and was repaired and/or replaced as necessary. The data collected were checked and analyzed to assess the functionality of the monitoring equipment and for compliance with the Chino Basin Subsidence Management Plan.
- Performed monthly routine maintenance, data collection, and verification at the Ayala Park, Chino Creek, and Pomona extensometer facilities. This included two special efforts: (i) develop plans and cost estimates to automate data collection at the extensometer facilities and (ii) improve the extensometer monitoring at the Pomona Extensometer.
- Conducted Spring-2024 ground-elevation surveys at established benchmarks across the Managed Area and Northwest MZ-1 Area.

# Optimum Basin Management Program

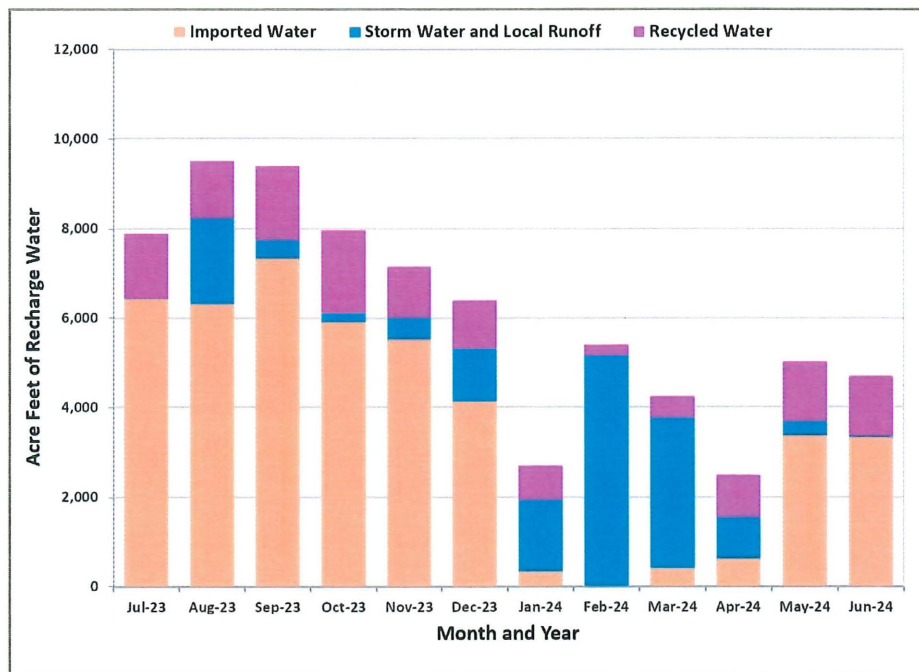
## Program Element 1: Develop and Implement a Comprehensive Monitoring Program (Continued)

- Performed InSAR analyses of vertical ground motion across all areas of subsidence concern for the periods 2022-23 and 2023-24.
- Continued monitoring of Northwest MZ-1 pursuant to the Work Plan:
  - Collected, processed, and checked groundwater level and production data from wells in Northwest MZ-1 on a monthly basis.

## Program Element 2: Develop and Implement a Comprehensive Recharge Program

The objectives of the comprehensive recharge program include: enhancing the yield of the Chino Basin through the development and implementation of a Recharge Master Plan to improve, expand, and construct recharge facilities that enable the recharge of storm, recycled, and imported waters; ensuring a balance of recharge and discharge in the Chino Basin management zones; and ensuring that sufficient storm and imported waters are recharged to comply with the recycled water dilution requirements in Watermaster and the IEUA's recycled water recharge permits.

Pursuant to Program Element 2 of the OBMP, Watermaster and the IEUA partnered with the San Bernardino County Flood Control District and the Chino Basin Water Conservation District to construct and/or improve 18 recharge sites. This project is known as the Chino Basin Facilities Improvement Project (CBFIP). The average annual stormwater recharge of the CBFIP facilities is approximately 10,000 acre-feet per year, the supplemental "wet"<sup>1</sup> water recharge capacity is about 56,600 acre-feet per year, and the in-lieu supplemental water recharge capacity ranges from 17,700 to 49,900 acre-feet per year. In addition to the CBFIP facilities, the Monte Vista Water District (MVWD) has four ASR wells with a well injection capacity of 5,500 acre-feet per year. The current total supplemental water recharge capacity ranges from 90,310 to 118,310 acre-feet per year, which is greater than the projected supplemental water recharge capacity required by Watermaster.



In 2008, Watermaster began preparing the *2010 Recharge Master Plan Update* (2010 RMPU) pursuant to the December 21, 2007 Court Order (the Peace II Agreement) to complete a Recharge Master Plan Update by July 1, 2010. In October 2010, the Court accepted the 2010 RMPU as satisfying the condition and ordered that certain recommendations of the 2010 RMPU be implemented. In November 2011, Watermaster reported its progress to the Court pursuant to the October 2010 Court Order, and in December 2011, the Court issued an order directing Watermaster to continue with its implementation of the 2010 RMPU per its October 2010 order but with a revised schedule. On December 15, 2011, the Watermaster Board moved to:

"approve that within the next year there will be the completion of [a] Recharge Master Plan Update, there will be the development of an Implementation Plan to address balance issues within the Chino Basin subzones, and the development of a Funding Plan, as presented."

<sup>1</sup> The modifier "wet" means actual physical water is being recharged in spreading basins as opposed to the dedication of water from storage or in-lieu recharge.

# Optimum Basin Management Program

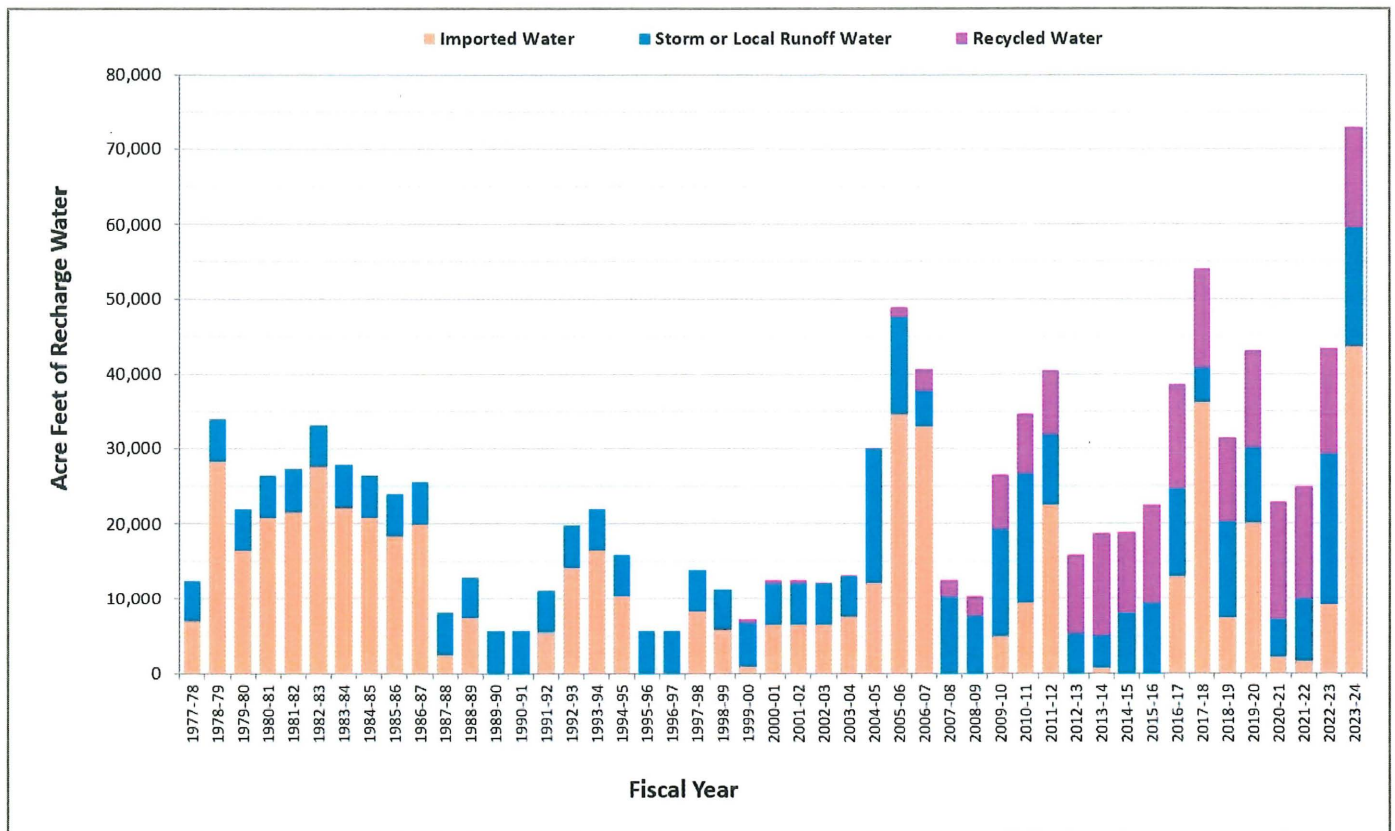
## Program Element 2: Develop and Implement a Comprehensive Recharge Program (Continued)

This motion led to the development of an update to the 2010 RMPU and in 2012, Watermaster staff sent out a “call for projects” to the Watermaster Parties, seeking their recommendations for recharge improvement projects that should be considered in the update. The 2013 Amendment to the 2010 Recharge Master Plan Update (2013 RMPU) outlines the recommended projects to be implemented by Watermaster and the IEUA and lays out the implementation and financing plans. The 2013 RMPU report was approved by the Watermaster Board in September 2013 and filed with the Court in October 2013. In December 2013, the Court approved the 2013 RMPU except for Section 5, which dealt with the accounting for new recharge from Municipal Separate Stormwater Sewer Systems; Section 5 was later approved by the Court in April 2014.

In September 2018, Watermaster completed the 2018 Recharge Master Plan Update (2018 RMPU) and submitted it to the Court in October 2018. On December 28, 2018, the Court approved the 2018 RMPU.

In September 2023, Watermaster completed the 2023 Recharge Master Plan Update (2023 RMPU) and submitted it to the Court in October 2023. The Court approved the 2023 RMPU on December 6, 2023.

**2013 RMPU Implementation.** Watermaster and the IEUA are continuing to carry out the October 2013 Court Order, which authorizes them to implement the 2013 RMPU. Construction of the San Sevaine Basin improvements was completed in September 2018 and the construction of the Victoria Basin improvements was completed in December 2018. During this reporting period, the construction work for the Wineville/Jurupa/RP3 and Lower Day projects continued. The Lower Day project is substantially complete, pending a check list and final systems test. IEUA finalized the required regulatory agreement with California Department of Fish and Wildlife, which has delayed the project bidding and construction for the Montclair Basins project. The updated project completion date for Montclair Basins is fall 2025.



# Optimum Basin Management Program

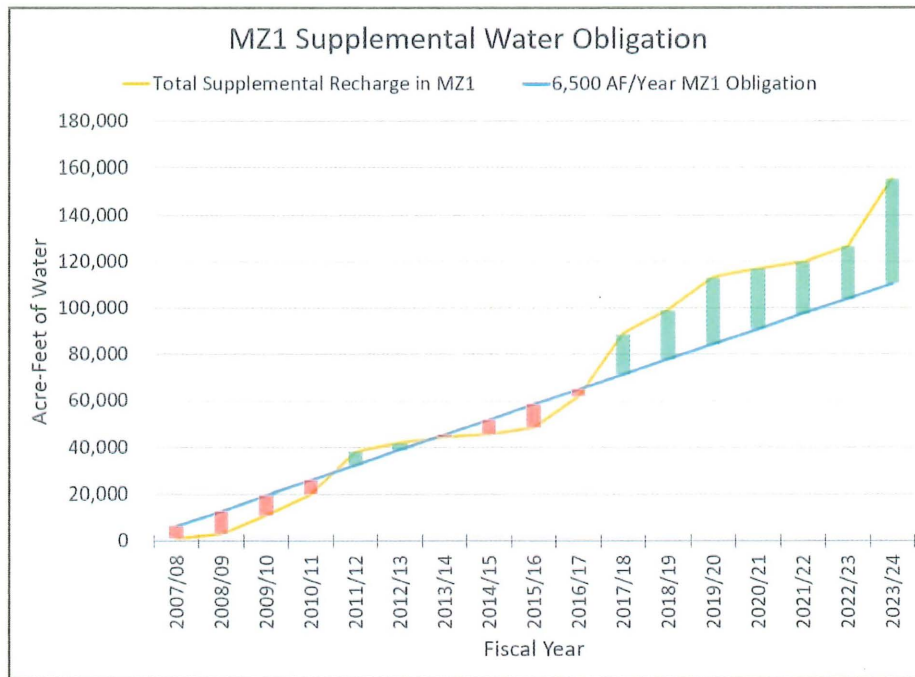
## Program Element 2: Develop and Implement a Comprehensive Recharge Program (Continued)

Additionally, Watermaster and the IEUA continue to collaborate in the development of projects outside of the 2013 RMPU effort that will increase and/or facilitate stormwater and supplemental water recharge and have jointly funded these projects, including monitoring upgrades and habitat conservation. During this reporting period, no projects were completed.

The Recharge Investigation and Projects Committee met two times during this reporting period on the progress of implementing the 2013 RMPU Projects and other recharge-related projects.

**Recharge for Dilution of Recycled Water.** In fiscal year 2009/10, Watermaster and the IEUA's recycled water recharge permit was amended to allow for existing underflow dilution and extended the period for calculating dilution from a running 60-month to a running 120-month period. Additionally, the IEUA has worked with the DDW to obtain approval to increase the allowable recycled water contribution (RWC) at wells to 50 percent. These permit amendments allow for increased recycled water recharge without having to increase the amount of imported and storm waters required for dilution. The IEUA projects its dilution requirements as part of its annual reporting to the Santa Ana Water Board. Based on the latest Annual Report (May 2024)<sup>2</sup>, the IEUA projects that dilution requirements will be met through 2031 even if no imported water is available for dilution.

**Recharge Activities.** During this reporting period, ongoing recycled water recharge occurred in the Brooks, 8th Street, Turner, Victoria, San Sevaine, Hickory, Banana, RP-3, and Declez Basins; stormwater was recharged at 18 recharge basins across all Chino Basin management zones; and imported water was recharged at MVWD's ASR wells, Upland, College Heights, Montclair, Lower Day, Etiwanda, San Sevaine, Hickory, RP-3, and Jurupa Basins. From January 1 through June 30, 2024, Watermaster and the IEUA recharged a total of 24,509 acre-feet of water: 11,482 acre-feet of stormwater, 4,961 acre-feet of recycled water, and 8,066 acre-feet of imported water.



**Balance of Recharge and Discharge in MZ-1.** The total amount of supplemental water recharged in MZ-1 since the Peace II Agreement through June 30, 2024 was approximately 155,712 acre-feet, which is about 45,212 acre-feet more than the 110,500 acre-feet required by June 30, 2024 (annual requirement of 6,500 acre-feet). The amount of supplemental water recharged into MZ-1 during the reporting period was approximately 6,330 acre-feet.

<sup>2</sup> <https://www.ieua.org/wp-content/uploads/2024/05/CAWR-GRP-2023-Annual-Report-Final.pdf>

# Optimum Basin Management Program

---

## **Program Element 3: Develop and Implement Water Supply Plan for the Impaired Areas of the Basin; and Program Element 5: Develop and Implement Regional Supplemental Water Program**

As stated in the OBMP, “the goal of Program Elements 3 and 5 is to develop a regional, long range, cost effective, equitable, water supply plan for producers in the Chino Basin that incorporates sound basin management.” One element of the water supply plan is the development of a way to replace the decline in agricultural groundwater production to prevent significant amounts of degraded groundwater from discharging to the Santa Ana River and violating the Basin Plan. Replacing the decline in agricultural groundwater production will mitigate the reduction of the Safe Yield of the basin and allow for more flexibility in the basin’s supplemental water supplies if the produced groundwater is treated. This is achieved through the operation of the Chino Basin Desalter facilities, which comprise a series of wells and treatment facilities in the southern Chino Basin that are designed to replace the decline of the agricultural groundwater producers and to treat and serve this groundwater to various Appropriative Pool members.

The Chino I Desalter expansion and the Chino II Desalter facilities were completed in February 2006, bringing the total Chino Basin Desalter capacity to 29 million gallons per day (MGD) (32,480 acre-feet per year). Development and planning continued between the Chino Desalter Authority (CDA) and Watermaster to expand the production and treatment capacity of the Chino Basin Desalters by about 10 MGD. More than \$77 million in grant funds were secured toward this expansion. As currently configured, the Chino I Desalter treats about 14,500 acre-feet of groundwater per year (12.9 MGD) pumped from 14 wells (I-1 through I-11, I-13 through I-18, I-20, and I-21). This water is treated through air stripping (volatile organic compound [VOC] removal), ion exchange (nitrate removal), and/or reverse osmosis (for nitrate and TDS removal). The Chino II Desalter produces about 25,500 acre-feet of groundwater per year (22.7 MGD) from pumping at eleven wells (II-1 through II-4 and II-6 through II-12). This water is treated through ion exchange and/or reverse osmosis. Well I-18 came online for the first time in 2023 as part of the remedial solution for the Chino Airport (see Chino Airport Plumes section under PE 6 in this report).

The most recently completed expansion of the Chino Basin Desalters included adding three wells (Wells II-10, II-11, and II-12) to Chino II Desalter. These wells provide additional raw water to the Chino II Desalter to meet the maximum-benefit commitment to produce a total of 40,000 acre-feet per year from the combined desalter well fields. These wells are also being utilized as part of the remediation action plan to clean up the South Archibald Plume (see the Program Element 6 update in this status report). Construction of wells II-10 and II-11 was completed in late 2015, equipping of the wells was completed in August 2018, and production at the wells commenced soon after. Construction of well II-12 was completed in November 2020. Construction of the dedicated pipeline to convey groundwater from wells II-12, II-10, II-11, and I-11 to the Chino II Desalter was completed in August 2021 and well II-12 began pumping soon after. The Chino Basin Desalters reached the 40,000 acre-feet per year of pumping capacity in June 2020, prior to the commencement of pumping at well II-12. During the reporting period, the Chino Basin Desalters maintained the pumping rate of 40,000 acre-feet per year.

## **Program Element 4: Develop and Implement a Comprehensive Groundwater Management Plan for Management Zone 1**

Because of the historical occurrence of pumping induced land subsidence and ground fissuring in southwestern Chino Basin (Managed Area), the OBMP required the development and implementation of an Interim Management Plan (IMP) for MZ-1 that would:

- Minimize subsidence and fissuring in the short-term.
- Collect the information necessary to understand the extent, rate, and mechanisms of subsidence and fissuring.
- Formulate a management plan to reduce to tolerable levels or abate future subsidence and fissuring.

From 2001-2005, Watermaster developed, coordinated, and conducted an IMP under the guidance of the MZ-1 Technical Committee (referred to now as the Ground-Level Monitoring Committee or GLMC). The investigation provided enough information for Watermaster to develop Guidance Criteria for the MZ-1 producers in the investigation area that, if followed, would minimize the potential for subsidence and fissuring during the completion of the MZ-1 Plan. The Guidance Criteria included a list of Managed Wells and their owners subject to the criteria, a map of the so-called Managed Area, and an initial threshold water level (Guidance Level) of 245 feet below the top of the PA-7 well casing. The MZ-1 Summary Report and the Guidance Criteria were adopted by the Watermaster Board in May 2006. The Guidance Criteria formed the basis for the MZ-1 Plan, which was approved by Watermaster in October 2007. The Court approved the MZ-1 Plan in November 2007 and ordered its implementation. Watermaster has implemented the MZ-1 Plan since that time, including the ongoing Ground-Level Monitoring Program called for by the MZ-1 Plan (refer to in Program Element 1).

# Optimum Basin Management Program

---

## Program Element 4: Develop and Implement a Comprehensive Groundwater Management Plan for Management Zone 1 (Continued)

The MZ-1 Plan states that if data from existing monitoring efforts in the so-called Areas of Subsidence Concern indicate the potential for adverse impacts due to subsidence, Watermaster will revise the MZ-1 Plan pursuant to the process outlined in Section 3 of the MZ-1 Plan. In early 2015, Watermaster prepared an update to the MZ-1 Plan, which included a name change to the *2015 Chino Basin Subsidence Management Plan*, and a *Work Plan to Develop the Subsidence Management Plan for Northwest MZ-1* (Work Plan) as an appendix. The Chino Basin Subsidence Management Plan and the Work Plan were adopted through the Watermaster Pool process in July 2015.

The data, analysis, and reports generated through the implementation of the MZ-1 Plan, Chino Basin Subsidence Management Plan, and Work Plan are reviewed and discussed by the GLMC, which meets on a periodic basis throughout the year. The GLMC is open to all interested participants, including the Watermaster Parties and their consultants. During this reporting period, Watermaster undertook the following data analysis and reporting tasks:

- Finalized the technical memorandum: *1D Model Simulation of Subsidence in Northwest MZ—Subsidence Management Alternative #1*. This work was performed to understand the potential future rates of subsidence in Northwest MZ-1 through 2050 under the pumping/recharge plans of the parties as simulated for the 2020 Safe Yield Reset. The recommendation from this work is that Watermaster should establish a “Northwest MZ-1 Guidance Level” of 630 ft above-mean sea level (amsl) for hydraulic heads in Layers 3 and 5 at the PX location. The Guidance Level approximates the current and projected heads in Layer 1 where the current and projected rates of compaction are the lowest. The Guidance Level would be an aspirational Watermaster recommendation that, if achieved, would likely slow the rates of compaction and subsidence to more tolerable levels over time.
- Began work in preparing figures and tables for the *2023-24 Annual Report for the Ground-Level Monitoring Program*.
- Prepared draft and final technical memoranda on the *Recommended Scope and Budget for the GLMP for FY 2024/25*. This memorandum was prepared with input from the GLMC and was used to inform the Watermaster’s budgeting process for FY 2024-25.
- Prepared draft and final technical memoranda on the *Locations and Data for the Construction and Calibration of Additional 1D Compaction Models*. This memorandum was prepared with input from the GLMC. These new 1D Models will be used to estimate the potential for future land subsidence associated with future projections of pumping and recharge in the Chino Basin, such as in future Safe Yield resets and reevaluations.
- Began work on constructing and calibrating the new 1D Models.

One GLMC meeting was conducted during the reporting period on March 7, 2024. The meeting presentation and agenda packet were posted to the Watermaster’s website. The meeting agenda included:

- Responses to GLMC Comments: *1D Model Simulation of Subsidence in Northwest MZ-1—Subsidence Management Alternative #1*.
- Draft Technical Memorandum: *Proposed Locations and Data for Construction and Calibration of Additional 1D Models*.
- Draft Technical Memorandum: *Recommended Scope of Work and Budget for the Ground Level Monitoring Program for Fiscal Year 2024/25*.

## Program Element 6: Develop and Implement Cooperative Programs with the Regional Water Quality Control Board, Santa Ana Region and Other Agencies to Improve Basin Management

Program Elements 6 and 7 are necessary to address the water quality management problems in the Chino Basin. During the development of the OBMP, it was identified that Watermaster did not have sufficient information to determine whether point and non-point sources of groundwater contamination were being adequately addressed, including the various Chino Basin contaminant plumes. With the Santa Ana Water Board and other agencies, Watermaster has worked to address the following major point source contaminant plumes in the Chino Basin:

### *South Archibald Plume*

In July 2005, the Santa Ana Water Board prepared draft Cleanup and Abatement Orders (CAOs) for six parties who were tenants on the Ontario Airport regarding the South Archibald Trichloroethene (TCE) Plume in the southern portion of the Chino Basin. The draft

# Optimum Basin Management Program

---

## Program Element 6: Develop and Implement Cooperative Programs with the Regional Water Quality Control Board, Santa Ana Region and Other Agencies to Improve Basin Management (Continued)

CAOs required the parties to “submit a work plan and time schedule to further define the lateral and vertical extent of the TCE and related VOCs that are discharging, have been discharged, or threaten to be discharged from the site” and to “submit a detailed remedial action plan, including an implementation schedule, to cleanup or abate the effects of the TCE and related VOCs.” Four of the six parties (Aerojet-General Corporation, The Boeing Company, General Electric, and Lockheed Martin) voluntarily formed a group known as ABGL to work jointly on a remedial investigation. Northrop Grumman declined to participate in the group. The US Air Force, in cooperation with the US Army Corps of Engineers, funded the installation of one of the four clusters of monitoring wells installed by the ABGL Parties.

In 2008, Santa Ana Water Board staff conducted research pertaining to the likely source of the TCE contamination and identified discharges of wastewater that may have contained TCE to the RP-1 treatment plant and associated disposal areas as a potential source. The Santa Ana Water Board identified several industries, including some previously identified tenants of the Ontario Airport property, that likely used TCE solvents before and during the early-1970s, and discharged wastes to the Cities of Ontario and Upland’s sewage systems and subsequently to the RP-1 treatment plant and disposal areas. In 2012, an additional Draft CAO was issued by the Santa Ana Water Board jointly to the City of Ontario, City of Upland, and IEUA as the previous and current operators of the RP-1 treatment plant and disposal area (collectively, the RP-1 Parties). In part, the draft CAOs required that RP-1 Parties “supply uninterrupted replacement water service [...] to all residences south of Riverside Drive that are served by private domestic wells at which TCE has been detected at concentrations at or exceeding 5 µg/L [...]” and to report this information to the Santa Ana Water Board. In addition, the RP-1 Parties are to “prepare and submit [a] [...] feasibility study” and “prepare, submit and implement the Remedial Action Plan” to mitigate the “effects of the TCE groundwater plume.”

Under the Santa Ana Water Board’s oversight, the ABGL Parties and/or the RP-1 Parties conducted four sampling events at private residential wells and taps between 2007 and 2014 in the region where groundwater is potentially contaminated with TCE. By 2014, all private wells and/or taps in the region of the plume had been sampled at least once. Alternative water systems (tanks) have been installed at residences in the area where well or tap water contains TCE at or above 80 percent of the maximum contaminant level (MCL) of 5 µg/L. Watermaster has also been sampling at the private wells.

In July 2015, the RP-1 Parties completed the Draft Feasibility Study Report for the South Archibald Plume (Feasibility Study). The Feasibility Study established cleanup objectives for both domestic water supply and plume remediation and evaluated alternatives to accomplish these objectives. In November 2015, a revised Draft Feasibility Study, Remedial Action Plan, and Responses to Comments were completed to address input from the public, the ABGL, and others. In September 2016, the Santa Ana Water Board issued the Final CAO R8-2016-0016 collectively to the RP-1 Parties and the ABGL Parties. The Final CAO was adopted by all parties in November 2016, thus approving the preferred plume remediation and domestic water supply alternatives identified in the Remedial Action Plan. The parties also reached a settlement agreement that aligns with the Final CAO and authorizes funding to initiate implementation of the plume remediation alternative.

The plume remediation alternative involves the use of CDA production wells and facilities. The RP-1 Parties reached a Joint Facility Development Agreement with the CDA for the implementation of a project designed in part to remediate the South Archibald Plume. The project, termed the Chino Basin Improvement and Groundwater Clean-up Project, includes the operation of three newly constructed CDA wells (II-10, II-11, and II-12) and a dedicated pipeline connecting the three wells and the existing CDA well I-11 to the Desalter II treatment facility. It also includes the addition of an air stripping system at the treatment facility to remove TCE and other VOCs. Construction of two of the three wells (II-10 and II-11) were completed and became operational in 2018 and construction of an onsite monitoring well near the proposed location of CDA well II-12 (II-MW-3) was completed in 2019. The construction of well II-12 was completed in November 2020. In the first half of 2021, the RP-1 Parties and the CDA submitted the final *Monitoring and Reporting Plan for the Chino Basin Improvement and Groundwater Clean-up Project* to the Santa Ana Water Board and completed the construction of five multi-depth monitoring wells at two locations in the South Archibald Plume (II-MW-4 and II-MW-5). In 2021, the CDA completed the equipping of well II-12, the modification to the decarbonator, and the construction of the raw water pipeline, and the project became operational in August of 2021. The Monitoring and Reporting plan stipulates ongoing quarterly sampling at the CDA production and monitoring wells within and near the plume and at nearby agency-owned wells.

The domestic water supply alternative for the private residences affected by TCE groundwater contamination is a hybrid between the installation of tank systems for some residences, where water is delivered from the City of Ontario potable supply via truck deliveries, and the installation of a temporary pipeline to connect some residences to the City of Ontario potable water system. Residences without a tank system or pipeline connection receive bottled water. The Cities of Ontario and Upland have assumed responsibility for implementing the domestic water supply alternative. In February 2017, the Cities of Ontario and Upland submitted the Domestic Water Supply Work Plan to the Santa Ana Water Board to outline the approach to monitoring and supplying alternative water

# Optimum Basin Management Program

---

## Program Element 6: Develop and Implement Cooperative Programs with the Regional Water Quality Control Board, Santa Ana Region and Other Agencies to Improve Basin Management (Continued)

supplies for affected residences. The City of Ontario will continue to monitor for potentially affected residences to ensure that an alternative water supply is offered and provided to any residences with TCE concentrations greater than 80% of the MCL for TCE. During the last reporting period the City of Ontario completed the annual water supply sampling event at private residences pursuant to the Domestic Water Supply Plan and prepared and submitted an annual monitoring report of the results to the Santa Ana Water Board in December 2023. As of the end of 2023, there are 30 affected residences that are being supplied water by tank systems, and five affected residences that remain on bottled water. There was no sampling for the domestic water supply alternative during this reporting period.

Watermaster delineates the spatial extent of the plume using data collected from their own sampling at private wells in the area and data collected as part of their data collection program. Watermaster completed its most recent characterization of the plume in June 2023 for the 2022 Chino Basin OBMP State of the Basin Report. In April of this reporting period, Watermaster prepared a semi-annual status report on the South Archibald Plume for Watermaster Parties.

### Chino Airport Plume

In 1990, the Santa Ana Water Board issued CAO No. 90-134 to the County of San Bernardino, Department of Airports (County) to address groundwater contamination originating from Chino Airport. During 1991 to 1992, ten underground storage tanks and 310 containers of hazardous waste were removed, and 81 soil borings were drilled and sampled on the airport property. From 2003 to 2005, nine onsite monitoring wells were installed and used to collect groundwater quality samples. In 2007, the County conducted its first offsite monitoring effort, and in 2008, the Santa Ana Water Board issued CAO No. R8-2008-0064, requiring the County to define the lateral and vertical extent of the plume and prepare a remedial action plan. From 2009 to 2015, Tetra Tech, consultant to the County, constructed 66 monitoring wells and conducted several off-site and on-site plume characterization studies to delineate the areal and vertical extent of the plume and determined that there were both east and west TCE and 1,2,3-TCP plumes. In August 2016, the County completed a Draft Feasibility Study to identify remedial action objectives and evaluate remediation alternatives for mitigation. In January 2017, the Santa Ana Water Board issued CAO R8-2017-0011, which requires the County to prepare a Final Feasibility Study that incorporates comments from the Santa Ana Water Board and to prepare, submit, and implement a Remedial Action Plan. The County submitted a Final Feasibility Study on June 6, 2017, and it was approved by the Santa Ana Water Board on June 7, 2017. On December 18, 2017, the County submitted the *Draft Interim Remedial Action Plan* with the remediation alternative of a groundwater pump-and-treat system to provide hydraulic containment and treatment of the Chino Airport plumes. The system consists of ten extraction wells that will produce approximately 1,700 gallons per minute along with groundwater produced from CDA's I-16 through I-18. CDA's I-20 and I-21 will be added to the system as needed. The groundwater extracted will be conveyed to a new granular activated carbon (GAC) system constructed by the CDA and funded by the County (South GAC System). An additional treatment system (North GAC System) constructed by CDA treats water from four CDA wells (I-1 through I-4) that produce from the lower aquifer in the plume; however, this system is not associated with the County's remedial action. Once treated at the South GAC system, water will be conveyed to the existing Chino I Desalter that uses reverse osmosis and ion exchange to treat for nitrate and TDS and will be discharged for use as potable municipal water supply.

Since 2018, the County constructed five extraction wells, 12 piezometers, and 14 monitoring wells to assist with the design for the remedial solution and delineation of the plumes. In 2022, the County completed the final *Remedial Action Work Plan* which divides the construction of the pump and treat system into two phases. The first Phase (1) is in progress and includes the construction of the onsite extraction wells, conveyance pipeline, and additional monitoring wells. From July to December 2023, the remaining onsite extraction wells were constructed and construction of the conveyance pipeline began during this reporting period in March 2024 with the final construction expected to be complete by July 2024. The remainder of Phase 1 should be completed by 2025. Phase 2 is expected to commence in 2025 with the construction of the offsite extraction wells. In April 2023, CDA wells I-17 (offline for 5 years) and I-18 (never been online) within the Chino Airport plume began pumping and conveyed groundwater for treatment at the South GAC System. The North GAC System began operation in April 2023. During this reporting period in June 2024, the County submitted the Groundwater Extraction and Treatment System Monitoring and Reporting Plan to the Santa Ana Water Board which outlines the monitoring and reporting that will be performed to meet the requirements of CAO R8-2017-0011 for implementation of the remedial action. This plan includes quarterly Remedial Action Operation and Monitoring Reports.

Watermaster has commitments to this area within the vicinity of the Chino Airport to maintain Hydraulic Control and to avoid impacts to the groundwater dependent riparian habitat in the Prado Basin, and in 2018 Watermaster used the Chino Basin groundwater flow model to analyze how increased groundwater production for the remedial solution will affect groundwater levels within the vicinity. Watermaster completed the modeling and prepared a technical memorandum to describe the results, which concluded that operation



# Optimum Basin Management Program

---

## Program Element 6: Develop and Implement Cooperative Programs with the Regional Water Quality Control Board, Santa Ana Region and Other Agencies to Improve Basin Management (Continued)

of the remedial solution would improve Hydraulic Control in this area. In January 2022, the County completed construction of six piezometers near the riparian habitat along Chino Creek and initiated monitoring of groundwater levels for potential impacts from pumping at the remedial solution.

The County conducts quarterly and/or annual monitoring events at all 89 of their monitoring wells constructed to date, as well as four onsite agricultural wells. The conclusions from this monitoring program can be found in reports posted on the State Water Board's GeoTracker website. The most recent monitoring report submitted to the Santa Ana Water Board is the *Semiannual Groundwater Monitoring Report Summer and Fall 2023 Chino Airport, San Bernardino County, California*, which was submitted to the Santa Ana Water Board during this reporting period in April 2024 and presents the results from the July 2023 and October 2023 sampling events. Watermaster also samples for water quality at private and monitoring wells in the area and uses this and other data obtained from its data collection programs to independently delineate the spatial extent of the plumes. In June 2023, Watermaster completed its most recent characterization of the plumes for the *2022 Chino Basin OBMP State of the Basin Report*. In April of this reporting period, Watermaster prepared a semi-annual status report on the Chino Airport Plume for Watermaster Parties.

### Other Plumes

Watermaster continues to track the monitoring programs and mitigation measures associated with other point sources in the Chino Basin, including: Alumax Aluminum Recycling, Alger Manufacturing Facility, the Former Crown Coach Facility, General Electric Test Cell and Flatiron, Former Kaiser Steel Mill, Milliken Landfill, Upland Landfill, and the Stringfellow National Priorities List sites. In October 2023 Watermaster prepared the most recent annual status reports for the GE Test Cell, GE Flatiron, Milliken Landfill, California Institution for Men, Stringfellow Plumes, and the former Kaiser Steel Mill site. The most current Watermaster delineations of the extent of these plumes were completed in June 2023 for the 2022 Chino Basin OBMP State of the Basin Report.

### Water Quality Management Program

Through the collaborative stakeholder process to update the OBMP in 2020 (see 2020 OBMP Update section of this report), the parties identified a new management action under PE 6 to develop a Water Quality Management Program that addresses contaminants of emerging regulations of concern to better prepare the parties for addressing compliance with new State and Federal drinking water regulations, and provide for the long-term maximum beneficial use of the basin. It was identified that reconvening the Water Quality Committee (WQC) that met historically from 2003 to 2010 to implement PE 6 of the 2000 OBMP would be the ideal approach to guide the development and implementation of the WQMP. Watermaster held a kick-off meeting in October 2023 to reconvene the WQC. During this reporting period two WQC meetings were conducted on January 31, 2024 and May 2, 2024. The January 2024 meeting attendees were asked to provide feedback on an initial Emerging Contaminants Monitoring Plan, and a framework and scope for a WQMP. The May 2024 meeting attendees provided feedback on the final ECMP for voluntary monitoring during fiscal year 2024/25.

## Program Element 7: Develop and Implement a Salt Management Program

### Maximum Benefit Salt and Nutrient Management Plan

In January 2004, the Santa Ana Water Board amended the Basin Plan to incorporate an updated TDS and nitrogen (N) management plan. The Basin Plan amendment includes both "antidegradation" and "maximum-benefit" objectives for TDS and nitrate as N (nitrogen) for the Chino-North and Cucamonga groundwater management zones (GMZs). The maximum-benefit objectives allow for recycled water reuse and recharge of recycled and imported waters without the immediate need for mitigation; these activities are an integral part of the OBMP. The application of the maximum-benefit objectives is contingent on the implementation of specific projects and requirements termed the maximum-benefit commitments by Watermaster and IEUA. The status of compliance with each commitment is reported to the Santa Ana Water Board annually in April. The nine maximum-benefit commitments include:

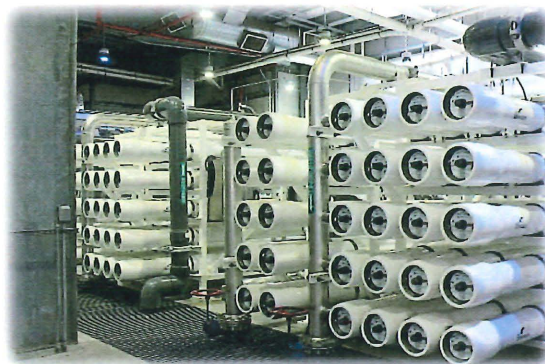
1. The development and implementation of a surface water monitoring program.
2. The development and implementation of a groundwater monitoring program.
3. The expansion of the Chino I Desalter to a capacity of 10 MGD and the construction of the Chino II Desalter with a design capacity of 10 MGD.
4. The additional expansion of desalter capacity (to 40 MGD) pursuant to the OBMP and the Peace Agreement (tied to the IEUA's agency-wide effluent TDS concentration).

# Optimum Basin Management Program

## Program Element 7: Develop and Implement a Salt Management Program (Continued)

5. The completion of the recharge facilities included in the Chino Basin Facilities Improvement Program.
6. The management of recycled water quality to ensure that the IEUA agency-wide, 12-month volume-weighted running average TDS and TIN concentrations do not exceed 550 mg/l and 8 mg/l, respectively.
7. The management of basin-wide, volume-weighted TDS and nitrogen concentrations in artificial recharge to less than or equal to the maximum-benefit objectives of 420 mg/l and 5 mg/l, respectively, on a five-year volume-weighted basis.
8. The achievement and maintenance of the “Hydraulic Control” of groundwater outflow from the Chino-North GMZ to protect Santa Ana River water quality and downstream beneficial uses.
9. The determination of ambient TDS and nitrate concentrations of Chino Basin groundwater every three years.

**Monitoring Programs.** Pursuant to maximum-benefit commitment numbers 1 and 2, Watermaster and the IEUA submitted a surface water and groundwater monitoring program work plan to the Santa Ana Water Board in May 2004. On April 15, 2005, the Santa Ana Water Board adopted resolution R8-2005-0064, approving Watermaster and the IEUA's surface and groundwater monitoring programs (2005 Work Plan). These monitoring programs were implemented pursuant to the 2005 Work Plan from 2004 to 2012. On February 12, 2012, the Santa Ana Water Board adopted an amendment to the Basin Plan to remove all references to the specific monitoring locations and sampling frequencies required for groundwater and surface water monitoring. The Basin Plan amendment allows the monitoring programs to be modified over time, subject to the approval of the Executive Officer of the Santa Ana Water Board. On December 6, 2012, the State Office of Administrative Law finalized the approval of the Basin Plan amendment. In place of specific monitoring requirements, the Basin Plan amendment required that Watermaster and the IEUA submit (i) a new surface water monitoring program work plan by February 25, 2012, and (ii) a new groundwater monitoring program work plan by December 31, 2013 to the Santa Ana Water Board for approval. Pursuant to (i), Watermaster and the IEUA submitted the *2012 Hydraulic Control Monitoring Program Work Plan*, which was approved by the Santa Ana Water Board in March 2012. Pursuant to (ii), Watermaster and the IEUA submitted the *2014 Maximum-Benefit Monitoring Program Work Plan (2014 Work Plan)* which was approved by the Santa Ana Water Board in April 2014. The 2014 Workplan describes the questions to be answered by the monitoring program, the methods that will be employed to address each question, the monitoring and data collection that will be performed to implement the methods, and a reporting schedule. The monitoring pursuant to the 2014 Work Plan is incorporated as part of the groundwater level, groundwater quality, and surface water monitoring programs described in Program Element 1. During this reporting period, Watermaster continued to implement the monitoring programs (see Program Element 1 for details).



Filtration System at the CDA II Treatment Facility

**Hydraulic Control and Chino Basin Desalters.** Pursuant to maximum-benefit commitment number 8, to achieve and maintain Hydraulic Control, the Chino Basin Desalters were expanded (maximum-benefit commitments numbers 3 and 4) to increase production in the southern portion of the Chino Basin. The Chino Basin Desalters are designed to replace the decreased agricultural production that previously prevented the outflow of high TDS and nitrate groundwater to the Santa Ana River and the Prado Basin surface water management zone (PBMZ). Hydraulic Control is defined in the Basin Plan as the elimination of groundwater discharge from the Chino-North GMZ to the Santa Ana River to a *de minimis* level. Pursuant to commitment number 8, Watermaster and the IEUA submitted a mitigation plan (2005 Mitigation Plan) to the Santa Ana Water Board in March 2005. This plan demonstrated how Watermaster and the IEUA would address the mitigation for any temporary loss of Hydraulic Control. In October 2011, the Santa Ana Water Board defined the *de minimis* discharge of groundwater from the Chino-North GMZ to the PBMZ as 1,000 acre-feet per year or less. The construction and operation of the Chino Creek Well Field (CCWF) in the west (wells I-16, I-17, I-18, I-20, and I-21) is intended to achieve Hydraulic Control, per the definition above, at the area west of Chino I Desalter Well 5. The CCWF began full operation in 2016. Watermaster and the IEUA recalibrate the Chino Basin groundwater-flow model every five years to estimate groundwater discharge from the Chino-North GMZ to the PBMZ (i.e., annual underflow past the CCWF) to determine whether Hydraulic Control has been achieved in the west. Watermaster and the IEUA have demonstrated that complete Hydraulic Control has been achieved at and east of Chino I Desalter Well 20, based on groundwater elevation contour analyses, and underflow past the CCWF is below the *de minimis* level of 1,000 acre-feet per year based on the model analyses.

# Optimum Basin Management Program

---

## Program Element 7: Develop and Implement a Salt Management Program (Continued)

In February 2016, the CCWF commenced full-scale operation with production at wells I-16, I-17, I-20, and I-21 to achieve and maintain Hydraulic Control at the area west of Chino I Desalter Well 5. Production at the CCWF has decreased since 2017 as a result of the new MCL for 1,2,3-TCP, which required Well I-17 to cease operation until April 2023, when it was restarted with additional treatment. In 2020, the Chino Basin groundwater-flow model was used to estimate the historical (fiscal year 2004-2018) and projected (fiscal year 2019-2050) volume of groundwater discharge past the CCWF under revised pumping conditions at the CCWF. The model results indicate that both the estimated historical and projected discharge past the CCWF area are always below the *de minimis* threshold level of 1,000 acre-feet per year. The model assumes an annual average pumping volume at the CCWF of 992 acre-feet per year from fiscal year 2019 through 2050.

Future agricultural groundwater production in the southern part of the basin is expected to continue to decline, necessitating future expansion of the desalters to sustain Hydraulic Control. In a letter dated January 23, 2014, the Santa Ana Water Board required that Watermaster and the IEUA submit a plan detailing how Hydraulic Control will be sustained in the future as agricultural production in the southern region of Chino-North continues to decrease—specifically, how the Chino Basin Desalters will achieve the required total groundwater production level of 40,000 acre-feet per year. On June 30, 2015, Watermaster and the IEUA submitted a final plan and schedule for the construction and operation of three new desalter wells (II-10, II-11, and II-12). Well II-10 and II-11 were constructed and began operation in mid-2018, and Well II-12 was constructed in 2020 and began operation in mid-2021. The Chino Basin Desalters officially reached the pumping capacity necessary to meet the 40,000 acre-feet per year required for Hydraulic Control in June 2020. This pumping capacity was achieved without the inclusion of Well II-12, which was operational in August 2021 and was part of the final expansion plan designed to meet the 40,000 acre-feet per year. A full status report on the desalter expansion facilities is described in Program Element 3.

Watermaster prepared an update to the 2005 Mitigation Plan to formally revise the (i) plan and schedule for the mitigation of any temporary loss of Hydraulic Control, (ii) definition of the required minimum pumping at the CCWF to maintain outflows from the Chino-North GMZ to the PBMZ to *de minimis* level, and (iii) definition of operational flexibility around the 40,000 acre-feet per year requirement for the aggregate pumping at the CDA facilities. The draft updated mitigation plan was submitted to the Santa Ana Water Board on June 30, 2022. Following input from the Santa Ana Water Board staff, Watermaster, IEUA, and CDA submitted the final mitigation plan to the Santa Ana Water Board on December 11, 2023. The updated mitigation plan removed the definition of the minimum pumping requirement at the CCWF to maintain Hydraulic Control, provided definition of operational flexibility for desalter production fluctuations on the order of plus or minus 2,100 acre-feet a year that maintain a five-year average pumping of about 40,000 acre-feet a year, and updated protocol for mitigation of temporary loss of Hydraulic Control.

**Recycled Water Quality.** Pursuant to the maximum-benefit commitment number 6, Watermaster and the IEUA manage the recycled water quality to ensure that the 12-month volume-weighted running average IEUA agency-wide, wastewater effluent quality does not exceed the permit limits of 550 mg/l and 8 mg/l for TDS and TIN, respectively. Additionally, Watermaster and the IEUA must submit a plan and schedule to the Santa Ana Water Board for the implementation of measures to ensure long-term compliance with these permit limits when either the 12-month volume-weighted running average IEUA agency-wide effluent TDS concentration exceeds 545 mg/l for three consecutive months or the TIN concentration exceeds 8 mg/l in any one month (action limits). The IEUA calculates and reports the 12-month volume-weighted running average agency-wide effluent TDS and TIN concentrations in the *Groundwater Recharge Program Quarterly Monitoring Reports*.

Since the initiation of recycled water recharge in July 2005, the 12-month running average TDS and TIN concentrations have ranged between 456 and 534 mg/l and 3.8 and 7.6 mg/l, respectively, and have never exceeded the permit limits. During the statewide drought in mid-2015, a historical high 12-month running average IEUA agency-wide effluent TDS concentration of 534 mg/l was calculated for three consecutive months: June, July, and August. This 12-month running average IEUA agency-wide effluent TDS concentration of 534 mg/l was only 11 mg/l below the action limit. The 12-month running average agency-wide TDS concentration has decreased since mid-2015. As of June 2024, the 12-month running average IEUA agency-wide effluent TDS concentration was 468 mg/l.

Through analysis of water supply and wastewater data, Watermaster and the IEUA concluded that drought conditions have a meaningful impact on the short-term TDS concentration of the water supplies available to IEUA agencies and that future droughts similar to the 2012-2016 period could lead to short-term exceedances of the 12-month running average IEUA agency-wide effluent TDS concentration. For this reason, in October 2016, Watermaster and the IEUA petitioned the Santa Ana Water Board to consider modifying the TDS compliance metric for recycled water to a longer-term averaging period. The Santa Ana Water Board agreed that an evaluation of the compliance metric was warranted and directed Watermaster and the IEUA to develop a technical scope of work to support the adoption of a longer-term averaging period for incorporation into the Basin Plan. The proposed technical scope

# Optimum Basin Management Program

---

## Program Element 7: Develop and Implement a Salt Management Program (Continued)

of work to support a Basin Plan amendment to revise the recycled water compliance metric was submitted to the Santa Ana Water Board in May 2017. The proposed scope of work which was approved by the Santa Ana Water Board includes the following tasks:

- Develop numerical modeling tools (R4, Hydrus 2D, MODFLOW, MT3D) to evaluate the projected TDS and nitrate concentrations of the Chino Basin.
- Define a baseline (status-quo) scenario and evaluate it with the new modeling tools.
- Define salinity management planning scenarios and evaluate them with the new modeling tools to compare the projected TDS and nitrate concentrations against the baseline scenario.
- Use the results to develop a draft regulatory compliance strategy that includes a longer-term average period for recycled water TDS concentrations.
- Collaborate with the Santa Ana Water Board to review and finalize the regulatory strategy.
- Support the Santa Ana Water Board in the preparation of a Basin Plan amendment upon approval of the regulatory strategy.

Watermaster and the IEUA began implementing the scope of work in July 2017 and worked collaboratively with the Santa Ana Water Board staff to review interim work products. In December 2021, Watermaster and the IEUA completed and submitted the documentation of the technical work, *Total Dissolved Solids and Nitrate Concentrations Projections for the Chino Basin*, to the Santa Ana Water Board. Watermaster and the IEUA presented the technical work and received approval from the Santa Ana Water Board staff in July 2022 to proceed with the work to amend the Basin Plan. Specifically, the amendment to the Basin Plan will, in part, modify the TDS compliance metrics and action limit for IEUA's recycled water supply under maximum-benefit commitment number 6 to a 10-year volume-weighted running average of the agency-wide supply.

During this reporting period, Watermaster and the IEUA provided support to the Santa Ana Water Board staff on the Basin Plan amendment, including preparing documents to comply with California Environmental Quality Act (CEQA) and other requirements needed to amend the Basin Plan.

**Recycled Water Recharge.** Pursuant to the maximum-benefit commitment number 5, Watermaster and the IEUA completed the construction of the recharge facilities and began artificial recharge of stormwater and recycled water in the Chino Basin in 2005. Additionally, pursuant to maximum-benefit commitment number 7, Watermaster and the IEUA limit recycled water for artificial recharge to the amount that can be blended on a volume-weighted basis with other sources of recharge to achieve five-year running average concentrations of no more than the maximum-benefit objectives (420 and 5 mg/l for TDS and nitrate, respectively). This data is analyzed and reported to the Santa Ana Water Board annually in April. During this reporting period, Watermaster and the IEUA continued their monitoring programs to collect the data required for analysis and reporting to the Santa Ana Water Board. Since recycled water recharge began in July 2005, the five-year volume-weighted running average TDS and nitrate concentrations have ranged from 203 to 354 mg/l and from 1.1 to 3.0 mg/l, respectively, and have never exceeded the maximum-benefit objectives. As of December 2023,, the five-year volume-weighted running average TDS and nitrate concentrations of these three recharge sources were 265 and 1.4 mg/l respectively.

As part of the Basin Plan amendment, the TDS and nitrate compliance metrics for the artificial recharge under maximum-benefit commitment number 5 are proposed to be modified to 10-year volume-weighted running average. During this reporting period, Watermaster and the IEUA continued to provide support to the Santa Ana Water Board staff for the Basin Plan amendment.

**Ambient Groundwater Quality.** Pursuant to the maximum-benefit commitment number 9, Watermaster and the IEUA are required to recompute the current ambient TDS and nitrate concentrations for the Chino Basin and Cucamonga GMZs every three years (due by June 30). The re-computation of ambient water quality is performed for the entire Santa Ana River Watershed, and the technical work is contracted, managed, and directed by the Santa Ana Watershed Project Authority's (SAWPA's) Basin Monitoring Program Task Force (Task Force). Watermaster and the IEUA have participated in each watershed-wide ambient water quality computation as members of the Task Force.

The most recent ambient water quality, which covers the 20-year period of 2002 to 2021 (2021 ambient water quality), was completed by the Task Force in October 2023. As part of this computation, Watermaster and the IEUA provided requested groundwater quality data, inputs on interim findings, and reviewed draft documentation to support the computation of the 2021

# Optimum Basin Management Program

---

## Program Element 7: Develop and Implement a Salt Management Program (Continued)

ambient water quality. Pursuant to the 2021 Basin Plan Amendment (R8-2021-0025), the Task Force is required to recompute the current ambient water quality every five years after October 1, 2023. The Santa Ana Water Board is currently preparing an amendment to the Basin Plan to ensure that the ambient water quality computation for GMZs with maximum-benefit Salt and Nutrient Management Plans is consistent with the schedule defined in the 2021 Basin Plan Amendment.

## Program Element 8: Develop and Implement a Groundwater Storage Management Program; and Program Element 9: Develop and Implement a Storage and Recovery Program

Groundwater storage is critical to the Chino Basin stakeholders. The OBMP outlines Watermaster's commitments to investigate the technical and management implications of Local Storage Agreements, improve related policies and procedures, and then revisit all pending Local Storage Agreement applications.

The existing Watermaster/IEUA/MWDSC/Three Valleys Municipal Water District Dry-Year Yield (DYY) program was initiated in the early 2000's and is the only Storage and Recovery Program that is being implemented in the Chino Basin. By April 30, 2011, all DYY program construction projects and a full "put" and "take" cycle had been completed, leaving the DYY storage account with a zero balance. Another DYY cycle began in June 2017 and was completed in June 2022. In response to the heavy precipitation in early 2023, MWDSC began recharging imported water in the Chino Basin in spring 2023. During the reporting period, MWDSC recharged about 6,086 acre-feet of imported water in the Chino Basin through the DYY program.

### Safe Yield Recalculation

The Basin's Safe Yield was initially set by the Judgment at 140,000 acre-feet per year. The Safe Yield was based on the hydrology for the period of 1965 through 1974. Pursuant to the Judgment, the Chino Basin Safe Yield is to be recalculated periodically but not for at least ten years following 1978.

Pursuant to the OBMP Implementation Plan and Watermaster's Rules and Regulations, in fiscal year 2010/11 and every ten years thereafter, Watermaster is to recalculate the Safe Yield. The 2011 Safe Yield recalculation began in 2011 and after significant technical and legal process, on April 28, 2017, the Court issued a final order (2017 Court Order), resetting the Safe Yield to 135,000 acre-feet per year effective July 1, 2010.

In July 2018, Watermaster's Engineer began the technical work necessary for the Safe Yield recalculation for 2020 pursuant to the OBMP Implementation Plan using the approved methodology in the 2017 Court Order. After substantial technical process and stakeholder engagement, the Watermaster Board adopted recommendations to the Court to update the Safe Yield for the period 2021 through 2030 to 131,000 acre-feet per year. In July 2020, the Court approved Watermaster's recommendation and reset the Safe Yield to 131,000 acre-feet per year for the period commencing on July 1, 2020 and ending on June 30, 2030.

The 2017 Court Order i) requires that the Safe Yield be reevaluated no later than June 30, 2025, ii) allows for supplementation of the current Safe Yield Reset methodology, and iii) requires annual collection and evaluation of data regarding cultural conditions of the Chino Basin. The annual data collection and evaluation process includes determining whether "there has been or will be a material change from existing and projected conditions or threatened undesirable results" as compared to the conditions evaluated in the 2020 Safe Yield Recalculation. If evaluation of the data suggests that any of these criteria are met, then Watermaster's Engineer is required to undertake "a more significant evaluation" to model the impacts of the existing and projected cultural conditions on the Chino Basin.

In 2022, Watermaster's Engineer completed a process to supplement the current Safe Yield Reset methodology to address comments received during the peer review process of the 2020 Safe Yield recalculation regarding uncertainty in the groundwater model and the data used in future projections. As a result of this process, which was supported by extensive peer review, Watermaster submitted an updated Safe Yield Reset methodology (2022 Safe Yield Reset methodology) to the Court. The Court approved the 2022 Safe Yield Reset methodology in December 2022.

During this reporting period, Watermaster's Engineer continued the annual data collection and evaluation process covering the period through fiscal year 2022/23 and continued the process to reevaluate the Safe Yield of the Chino Basin for the period of fiscal year 2021 through 2030 (the 2025 Safe Yield Reevaluation). The 2025 Safe Yield Reevaluation process includes updating Watermaster's groundwater-flow model and implementing the 2022 Safe Yield Reset methodology. Watermaster hosted three workshops during the reporting period to gather stakeholder and peer review input to support the 2025 Safe Yield Reevaluation.

# Optimum Basin Management Program

---

## Program Element 8: Develop and Implement a Groundwater Storage Management Program; and Program Element 9: Develop and Implement a Storage and Recovery Program (Continued)

### Groundwater Storage Management

**Addendum to PEIR.** The original OBMP storage management program consists of managing groundwater production, replenishment, recharge, and storage such that the total storage within the basin lies within the range known as the Safe Storage Capacity (SSC), which is the difference between the Safe Storage<sup>3</sup> and the Operational Storage Requirement<sup>4</sup>. The allocation and use of storage space in excess of the Safe Storage Capacity will preemptively require mitigation: mitigation must be defined, and resources must be committed to mitigation prior to allocation and use.

Water occupying the SSC includes Local Storage Account Water, Carryover Water, and water anticipated to be stored in future groundwater Storage and Recovery programs. This storage management program was evaluated in the OBMP programmatic environmental impact report (PEIR) in 2000.

After the OBMP PEIR, Watermaster and the Watermaster Parties revised the OBMP based on new monitoring and borehole data collected since 1998, an improved hydrogeologic conceptualization of the basin, new numerical models that have improved the understanding of basin hydrology since 2000, and the need to expand the Chino Basin Desalters (desalters) to the 40,000 acre-feet per year of groundwater production required in the OBMP Implementation Plan. These investigations included a recalculation of the total water in storage in the basin, based on the improved hydrogeologic understanding. The total storage in the Chino Basin for 2000 was estimated to be about 5.9 million acre-feet<sup>5</sup>, about 100,000 acre-feet greater than the estimated Safe Storage at the time.

The Watermaster Parties negotiated the Peace II Agreement to implement, among other things, the expansion of the desalters, the dedication of 400,000 acre-feet of groundwater in storage to desalter replenishment (i.e., approved overdraft), and changes in the Judgment to implement the Peace II Agreement. However, the storage management plan was not changed in light of the approved overdraft and the fact that the estimated storage in the basin exceeded the Safe Storage. The IEUA completed and subsequently adopted a supplemental environmental impact report for the Peace II Agreement in 2010.

As basin storage continued to grow following the implementation of the desalters and the Peace II Agreement, Watermaster and the IEUA proposed a temporary increase in the Safe Storage Capacity, which was analyzed through an addendum to the 2000 PEIR. On March 15, 2017, the IEUA adopted an addendum to the 2000 PEIR, increasing the Safe Storage Capacity from 500,000 acre-feet to 600,000 acre-feet for the period July 1, 2017 through June 30, 2021. This temporary increase in Safe Storage Capacity was found to not cause material physical injury (MPI) and/or loss of Hydraulic Control, and it provided Watermaster, with assistance from the Parties, time to develop a new storage management plan and agreements to implement it.

**2020 Storage Management Plan.** In 2019, Watermaster initiated a process with the Watermaster Parties and Board to develop the 2020 Storage Management Plan (2020 SMP) that would update the SMP currently included in the OBMP implementation plan. In that effort, Watermaster prepared a white paper that outlined the need and requirements of the 2020 SMP and presented it to the Watermaster Parties and other interested stakeholders in June 2019. This work built upon the findings of the 2018 Storage Framework Investigation, where Watermaster's Engineer evaluated the use of storage space in the range of 700,000 acre-feet to 1,000,000 acre-feet for potential Storage and Recovery programs. Watermaster and its Engineer published a final SMP report on December 19, 2019. This report was included in the 2020 OBMP Update Report, which the Watermaster Board adopted in full in October 2020. The SMP may be incorporated into the implementation plan for the 2020 OBMP Update.

**Local Storage Limitation Solution.** The temporary increase in Safe Storage Capacity to 600,000 acre-feet was set to expire on June 30, 2021, after which it would have declined to 500,000 acre-feet absent a new Court-approved storage agreement. At the end of Production Year 2020, the total volume of Managed Storage was about 588,000 acre-feet. Anticipating the expiration of the temporary increase in Safe Storage, Watermaster Parties recommended expanding environmental documentation and analysis to cover the use of Managed Storage above 500,000 acre-feet beyond June 30, 2021. The Parties' projected behavior and the operations of the DYY program were called the Local Storage Limitation Solution (LSLS). During fiscal year 2020/21, Watermaster's Engineer completed an investigation to assess the potential MPI for the LSLS using the updated groundwater-flow model that was used to recalculate the Safe Yield. The conclusions of the investigation were that there would be no unmitigable significant adverse impacts attributable to the LSLS. This work supported CEQA documentation to increase the Safe Storage Capacity after June 30, 2021. The LSLS allows the Safe Storage Capacity to increase to 700,000 acre-feet through June 30, 2030, and 620,000 acre-feet from

<sup>3</sup> Safe Storage is an estimate of the maximum storage in the basin that will not cause significant water quality and high groundwater related problems. Safe Storage was estimated in the development of the OBMP to be about 5.8 million acre-feet based on the then-current understanding of the basin.

<sup>4</sup> The Operational Storage Requirement is the storage or volume in the Chino Basin that is necessary to maintain the Safe Yield. This is an average value with the storage oscillating around this value due to dry and wet periods in precipitation. The Operational Storage Requirement was estimated in the development of the OBMP to be about 5.3 million acre-feet. This storage value was set at the estimated storage in the basin in 1997.

<sup>5</sup> The most recent modeling of the Chino Basin estimates the total water in storage to be about 12 million acre-feet.

# Optimum Basin Management Program

---

## **Program Element 8: Develop and Implement a Groundwater Storage Management Program; and Program Element 9: Develop and Implement a Storage and Recovery Program (Continued)**

July 1, 2030 through June 30, 2035. The CEQA documentation formed Addendum No. 2 to the OBMP PEIR, which was adopted by the IEUA Board on March 17, 2021. The Court granted Watermaster's motion to implement the LSLS, which became effective on July 1, 2021.

### *2020 OBMP Update*

OBMP implementation began in 2000. By 2019, many of the projects and management programs envisioned in the 2000 OBMP have been implemented. The understanding of the hydrology and hydrogeology of the Chino Basin has improved since 2000 and new water-management issues have been identified that necessitate that the OBMP be adapted to protect the collective interests of the Watermaster Parties and their water supply reliability. For these reasons, the Watermaster, with input from the Parties, prepared a 2020 OBMP Update to set the framework for the next 20 years of basin-management activities.

During 2019, Watermaster convened a collaborative stakeholder process to prepare the 2020 OBMP Update similar to the process employed for the development of the 2000 OBMP. The final 2020 OBMP Scoping Report (Scoping Report) was published in November 2019 to document the results of the first four Listening Sessions that Watermaster conducted with the stakeholders. The Scoping Report summarized (1) the need to update the OBMP, (2) the issues, needs, and wants of the stakeholders, (3) the goals for the 2020 OBMP Update, and (4) the recommended scope of work to implement seven stakeholder-defined basin-management activities that could be included in the 2020 OBMP Update.

Through the listening session process, it became apparent that the 2000 OBMP goals remain unchanged, and the nine Program Elements (PEs) defined in the 2000 OBMP are still relevant today as the overarching program elements of a basin management program. Each of the seven activities in the Scoping Report had objectives and tasks that were directly related to one or more of the 2000 OBMP PEs. Based on this finding, the nine PEs defined in the 2000 OBMP were retained for the 2020 OBMP Update. Each of the seven activities were mapped to one of the existing PEs.

In January 2020, the Watermaster published the 2020 OBMP Update Report, which described: (1) the 2020 OBMP Update process; (2) the OBMP goals and new activities for the 2020 OBMP Update; (3) the status of the OBMP PEs and ongoing activities within them; and (4) the recommended 2020 OBMP management plan – inclusive of ongoing and new activities. The management plan will form the foundation for the Watermaster Parties to develop a 2020 OBMP Implementation Plan and the agreements necessary to implement it. After several workshops and comprehensive review and comments by Watermaster Parties, the final 2020 OBMP Update Report was adopted by the Watermaster Board on October 22, 2020.

Additionally, in January 2020, Watermaster and IEUA (as the lead agency) began preparing a new subsequent Environmental Impact Report (SEIR) to support the OBMP Update. The updated SEIR will support decision-making, investment, and grant applications for ongoing and new management actions under the OBMP. Based on input from the Parties, the certification of the SEIR was postponed to a later time. Watermaster and IEUA re-initiated the process to update and certify the SEIR in 2022, hosting three workshops to solicit input from the Watermaster Parties on updates to the OBMP Update's project description and discuss the potential updates. IEUA released the draft SEIR for public review in September 2023. The comment period for the draft SEIR extended through November 9, 2023 and IEUA certified the final SEIR in February 2024 during this reporting period.

Two new management activities in the 2020 OBMP Update began in fiscal year 2023/24: (1) development of a Storage and Recovery Master Plan (SRMP); and (2) preparation of a WQMP. During the reporting period, Watermaster and its stakeholders continued convening the WQC to develop the WQMP. The activities of the WQC were to continue to define the objectives and refine the scope of work for the WQMP, including providing input on the development of a monitoring plan for emerging contaminants in the Chino Basin (see Groundwater Quality Management Program section under PE 6 in this report). The SRMP Committee (SRMPC) initially convened in November 2023 to define the objectives of the SRMP and refine the scope of work for its development, including defining desired benefits of Storage and Recovery Programs in the Chino Basin. The SRMPC did not meet during this reporting period but is expected to reconvene in fiscal year 2024/25.

CHINO BASIN WATERMASTER

Case No. RCVRS 51010

Chino Basin Municipal Water District v. City of Chino, et al.

PROOF OF SERVICE

I declare that:

I am employed in the County of San Bernardino, California. I am over the age of 18 years and not a party to the action within. My business address is Chino Basin Watermaster, 9641 San Bernardino Road, Rancho Cucamonga, California 91730; telephone (909) 484-3888.

On October 9, 2024 I served the following:

1. DECLARATION OF BRADLEY J. HERREMA IN SUPPORT OF MOTION FOR COURT TO RECEIVE AND FILE WATERMASTER SEMI-ANNUAL OBMP STATUS REPORT 2024-1

/ X / BY MAIL: in said cause, by placing a true copy thereof enclosed with postage thereon fully prepaid, for delivery by the United States Postal Service mail at Rancho Cucamonga, California, addresses as follows:  
**See attached service list:** Mailing List 1

/ \_\_\_ / BY PERSONAL SERVICE: I caused such envelope to be delivered by hand to the addressee.

/ \_\_\_ / BY FACSIMILE: I transmitted said document by fax transmission from (909) 484-3890 to the fax number(s) indicated. The transmission was reported as complete on the transmission report, which was properly issued by the transmitting fax machine.

/ X / BY ELECTRONIC MAIL: I transmitted notice of availability of electronic documents by electronic transmission to the email address indicated. The transmission was reported as complete on the transmission report, which was properly issued by the transmitting electronic mail device.  
**See attached service list:** Master Email Distribution List

I declare under penalty of perjury under the laws of the State of California that the above is true and correct.

Executed on October 9, 2024 in Rancho Cucamonga, California.

  
\_\_\_\_\_  
By: Ruby Favela Quintero  
Chino Basin Watermaster



PAUL HOFER  
11248 S TURNER AVE  
ONTARIO, CA 91761

JEFF PIERSON  
2 HEXHAM  
IRVINE, CA 92603

## **Ruby Favela Quintero**

---

**Contact Group Name:** Master Email Distribution

**Categories:** Main Email Lists

## Members:

Alan Frost	Alan.Frost@dpw.sbcounty.gov
Alberto Mendoza	Alberto.Mendoza@cmc.com
Alejandro R. Reyes	arreyes@sgvwater.com
Alex Padilla	Alex.Padilla@wsp.com
Alexis Mascarinas	AMascarinas@ontarioca.gov
Alfonso Ruiz	alfonso.ruiz@cmc.com
Allen Hubsch	ahubsch@hubschlaw.com
Alma Heustis	alma.heustis@nucor.com
Alonso Jurado	ajurado@cbwm.org
Alyssa Coronado	acoronado@sarwc.com
Amanda Coker	amandac@cvwdwater.com
Amy Bonczewski	ABonczewski@ontarioca.gov
Andrew Gagen	agagen@kidmanlaw.com
Andy Campbell	acampbell@ieua.org
Andy Malone	amalone@westyost.com
Angelica Todd	angelica.todd@ge.com
Anna Nelson	atruongnelson@cbwm.org
Anthony Alberti	aalberti@sgvwater.com
April Robitaille	arobitaille@bhfs.com
Art Bennett	citycouncil@chinohills.org
Arthur Kidman	akidman@kidmanlaw.com
Ashley Zapp	ashley.zapp@cmc.com
Ashok Dhingra	ash@akdconsulting.com
Ben Lewis	benjamin.lewis@gswater.com
Ben Markham	bmarkham@bhfs.com
Ben Roden	BenR@cvwdwater.com
Benjamin M. Weink	ben.weink@tetrattech.com
Beth.McHenry	Beth.McHenry@hoferranch.com
Bill Schwartz	bschwartz@mvwd.org
Bill Velto	bvelto@uplandca.gov
Board Support Team IEUA	BoardSupportTeam@ieua.org
Bob Bowcock	bbowcock@irmwater.com
Bob DiPrimio	rjdiprimio@sgvwater.com
Bob Feenstra	bobfeenstra@gmail.com
Bob Kuhn	bkuhn@tvmwd.com
Bob Kuhn	bgkuhn@aol.com
Bob Page	Bob.Page@rov.sbcounty.gov
Borosco@cityofchino.org	Borosco@cityofchino.org
Brad Herrema	bherrema@bhfs.com
Bradley Jensen	bradley.jensen@cao.sbcounty.gov
Brandi Belmontes	BBelmontes@ontarioca.gov
Brandi Goodman-Decoud	bgdecoud@mvwd.org
Brandon Howard	brahoward@niagarawater.com
Brenda Fowler	balee@fontanawater.com
Brent Yamasaki	byamasaki@mwdh2o.com
Brett Godown	Brett.Godown@Airports.SBCounty.Gov
Brian Dickinson	bdickinson65@gmail.com
Brian Geye	bgeye@autoclubspeedway.com
Brian Lee	blee@sawaterco.com
Brittany Modesto (bmodesto@cbwm.org)	bmodesto@cbwm.org
Bryan Smith	bsmith@jcsd.us

Carmen Sierra	carmens@cvwdwater.com
Carol Boyd	Carol.Boyd@doj.ca.gov
Carolina Sanchez	csanchez@westyost.com
Casey Costa	ccosta@chinodesalter.org
Cassandra Hooks	chooks@niagarawater.com
Cathleen Pieroni - Inland Empire Utilities Agency (cpieroni@ieua.org)	cpieroni@ieua.org
Chad Blais	cblais@ci.norco.ca.us
Chad Nishida	CNishida@ontarioca.gov
Chander Letulle	cletulle@jcsd.us
Charles Field	cdfield@att.net
Charles Moorrees	cmoorrees@sawaterco.com
Chino Hills City Council	citycouncil@chinohills.org
Chris Berch	cberch@jcsd.us
Chris Diggs	Chris_Diggs@ci.pomona.ca.us
Christen Miller	Christen.Miller@cao.sbcounty.gov
Christensen, Rebecca A	rebecca_christensen@fws.gov
Christiana Daisy	cdaisy@ieua.org
Christopher M. Sanders	cms@eslawfirm.com
Christopher R. Guillen	cguillen@bhfs.com
Cindy Cisneros	cindyc@cvwdwater.com
Cindy Li	Cindy.li@waterboards.ca.gov
City of Chino, Administration Department	

	administration@cityofchino.org
Courtney Jones	cjjones@ontarioca.gov
Craig Miller	CMiller@wmwd.com
Craig Stewart	craig.stewart@wsp.com
Cris Fealy	cifealy@fontanawater.com
Curtis Burton	CBurton@cityofchino.org
Dan McKinney	dmckinney@douglascountylaw.com
Daniel Bobadilla	dbobadilla@chinohills.org
Daniela Uriarte	dUriarte@cbwm.org
Danny Kim	dkim@linklogistics.com
Dave Argo	daveargo46@icloud.com
Dave Crosley	DCrosley@cityofchino.org
Dave Schroeder	DSchroeder@cbwcd.org
David Barnes	DBarnes@geoscience-water.com
David De Jesus	ddejesus@tvmwd.com
David Schroeder (dschroeder@cbwcd.org)	

dschroeder@cbwcd.org

Dawn Varacchi-Ives (dawn.varacchi@ge.com)

	dawn.varacchi@ge.com
Denise Garzaro	dgarzaro@ieua.org
Dennis Mejia	dmejia@ontarioca.gov
Dennis Williams	dwilliams@geoscience-water.com
Derek Hoffman	dhoffman@fennemorelaw.com
Diana Frederick	diana.frederick@cdcr.ca.gov
Ed Diggs	ediggs@uplandca.gov
Ed Means	edmeans@icloud.com
Eddie Lin (elin@ieua.org)	elin@ieua.org
Edgar Tellez Foster	etellezfoster@cbwm.org
Eduardo Espinoza	EduardoE@cvwdwater.com
Elizabeth M. Calciano	ecalciano@hensleylawgroup.com

Elizabeth P. Ewens	elizabeth.ewens@stoel.com
Elizabeth Willis	ewillis@cbwcd.org
Eric Fordham	eric_fordham@geopentech.com
Eric Garner	eric.garner@bbklaw.com
Eric Grubb	ericg@cvwdwater.com
Eric Lindberg PG,CHG	eric.lindberg@waterboards.ca.gov
Eric N. Robinson	erobinson@kmtg.com
Eric Papathakis	Eric.Papathakis@cdcr.ca.gov
Eric Tarango	edtarango@fontanawater.com
Erik Vides	evides@cbwm.org
Erika Clement	Erika.clement@sce.com
Eunice Ulloa	eulloa@cityofchino.org
Eunice Ulloa - City of Chino (eulloa@cityofchino.org)	eulloa@cityofchino.org
Evette Ounanian	EvetteO@cvwdwater.com
Frank Yoo	FrankY@cbwm.org
Fred Fudacz	ffudacz@nossaman.com
Fred Galante	fgalante@awattorneys.com
G. Michael Milhiser	directormilhiser@mvwd.org
G. Michael Milhiser	Milhiser@hotmail.com
Garrett Rapp	grapp@westyost.com
Geoffrey Kamansky	gkamansky@niagarawater.com
Geoffrey Vanden Heuvel	geoffreyvh60@gmail.com
Gerald Yahr	yahrj@koll.com
Gina Gomez	ggomez@ontarioca.gov
Gina Nicholls	gnicholls@nossaman.com
Gino L. Filippi	Ginoffvine@aol.com
Gracie Torres	gtorres@wmwd.com
Grant Mann	GMann@dpw.sbcounty.gov
Greg Zarco	Greg.Zarco@airports.sbcounty.gov
Gregor Larabee	Gregor.Larabee@cdcr.ca.gov
Ha T. Nguyen	ha.nguyen@stoel.com
Henry DeHaan	Hdehaan1950@gmail.com
Hvianca Hakim	HHakim@linklogistics.com
Hye Jin Lee	HJLee@cityofchino.org
Imelda Cadigal	Imelda.Cadigal@cdcr.ca.gov
Insixiengmay, Maria	Maria.Insxiengmay@cc.sbcounty.gov
Irene Islas	irene.islas@bbklaw.com
Ivy Capili	ICapili@bhfs.com
jacastruita@fontanawater.com	jacastruita@fontanawater.com
James Curatalo	jamesc@cvwdwater.com
Janelle S.H. Krattiger, Esq	janelle.krattiger@stoel.com
Jasmin A. Hall	jhall@ieua.org
Jason Marseilles	jmareilles@ieua.org
Jayne Joy	Jayne.Joy@waterboards.ca.gov
Jean Cihigoyenette	Jean@thejclawfirm.com
Jeff Evers	jevers@niagarawater.com
Jeff Mosher	jmosher@sawpa.org
Jeffrey L. Pierson	jpierson@intexcorp.com
Jenifer Ryan	jryan@kmtg.com
Jennifer Hy-Luk	jhyluk@ieua.org
Jeremy N. Jungreis	jjungreis@rutan.com
Jesse Pompa	jpompa@jcsd.us

jessica.lienau@lewisbrisbois.com  
Jessie Ruedas  
Jill Keehnen  
Jim Markman  
Jim Van de Water  
Jim W. Bowman  
jimmiem@cvwdwater.com  
Jimmy Gutierrez - Law Offices of Jimmy Gutierrez

Jimmy L. Gutierrez  
Jimmy Medrano  
Jiwon Seung  
Joanne Chan  
Joao Feitoza  
Jody Roberto  
Joe Graziano  
Joel Ignacio  
John Bosler  
John Harper  
John Hughes - Monte Vista Water District (jhughes@mvwd.org)

John Huitsing  
John Lopez  
John Lopez and Nathan Cole  
John Mendoza  
John Partridge  
John Russ  
John Schatz  
Jordan Garcia  
Jose A Galindo  
Jose Ventura  
Josh Swift  
Joshua Aguilar  
Justin Brokaw  
Justin Nakano  
Justin Scott-Coe Ph. D.  
Kaitlyn Dodson-Hamilton  
Karen Williams  
Kathleen Brundage  
Keith Person  
Kelly Ridenour  
kelly.black@lewisbrisbois.com  
Ken Waring  
Kevin O'Toole  
Kevin Sage  
klemieux@awattorneys.com  
kparker@katithewaterlady.com  
Krista Paterson  
Kurt Berchtold  
Kyle Brochard  
Kyle Snay  
Laura Roughton  
Laura Yraceburu

jessica.lienau@lewisbrisbois.com  
Jessie@thejclawfirm.com  
jill.keehnen@stoel.com  
jmarkman@rwglaw.com  
jimvdw@thomashardercompany.com  
jbowman@ontarioca.gov  
jimmiem@cvwdwater.com

jimmylaredo@gmail.com  
Jimmy@City-Attorney.com  
Jaime.medrano2@cdcr.ca.gov  
JiwonS@cvwdwater.com  
jchan@wvwd.org  
joao.feitoza@cmc.com  
jroberto@tvmwd.com  
jgraz4077@aol.com  
jignacio@ieua.org  
johnb@cvwdwater.com  
jrharper@harperburns.com

jhughes@mvwd.org  
johnhuitsing@gmail.com  
jlopez@sarwc.com  
customerservice@sarwc.com  
jmendoza@tvmwd.com  
jpartridge@angelica.com  
jruss@ieua.org  
jschatz13@cox.net  
jgarcia@cbwm.org  
Jose.A.Galindo@linde.com  
jose.ventura@linde.com  
jmswift@fontanawater.com  
jaguilar1@wmwd.com  
jbrokaw@marygoldmutualwater.com  
JNakano@cbwm.org  
jscottcoe@mvwd.org  
kaitlyn@tdaenv.com  
kwilliams@sawpa.org  
kathleen.brundage@californiasteel.com  
keith.person@waterboards.ca.gov  
KRIDENOUR@fennemorelaw.com  
kelly.black@lewisbrisbois.com  
kwaring@jcsd.us  
kotoole@ocwd.com  
Ksage@IRMwater.com  
klemieux@awattorneys.com  
kparker@katithewaterlady.com  
Kpaterson@kmtg.com  
kberchtold@gmail.com  
KBrochard@rwglaw.com  
kylesnay@gswater.com  
lroughton@wmwd.com  
lyraceburu@bhfs.com

Lauren V. Neuhaus, Esq.	lauren.neuhaus@stoel.com
Lee McElhaney	lmcclhaney@bmklawplc.com
Lewis Callahan	Lewis.Callahan@cdcr.ca.gov
Linda Jadeski	ljadeski@wvwd.org
Liz Hurst	ehurst@ieua.org
Lorena Heredia	lheredia@ieua.org
Mallory Gandara	MGandara@wmwd.com
Manny Martinez - Monte Vista Water District Director	DirectorMartinez@mvwd.org
Marcella Correa	MCorrea@rwglaw.com
Marco Tule	mtule@ieua.org
Maria Ayala	mayala@jcsd.us
Maria Mendoza	mmendoza@westyost.com
Maribel Sosa	msosa@ci.pomona.ca.us
Marilynhlevin@gmail.com	Marilynhlevin@gmail.com
Marissa Turner	mtturner@tvmwd.com
Mark D. Hensley	mhensley@hensleylawgroup.com
Mark Wiley	mwiley@chinohills.org
Marlene B. Wiman	mwiman@nossaman.com
Martin Cihigoyenetche	marty@thejclawfirm.com
Martin Rauch	martin@rauchcc.com
Martin Zvirbulis	mezvirbulis@sgvwater.com
Matthew H. Litchfield	mlitchfield@tvmwd.com
Maureen Snelgrove	Maureen.snelgrove@airports.sbcounty.gov
Melanie Trevino	Mtrevino@jcsd.us
Michael Adler	michael.adler@mcmcnnet.net
Michael B. Brown, Esq.	michael.brown@stoel.com
Michael Blay	mblay@uplandca.gov
Michael Fam	mfam@dpw.sbcounty.gov
Michael Hurley	mhurley@ieua.org
Michael Mayer	Michael.Mayer@dpw.sbcounty.gov
Michael P. Thornton	mthornton@tkeengineering.com
Michelle Licea	mlicea@mvwd.org
Mikayla Coleman	mikayla@cvstrat.com
Mike Gardner	mgardner@wmwd.com
Mike Maestas	mikem@cvwdwater.com
Miriam Garcia	mgarcia@ieua.org
Monica Nelson	mnelson@ieua.org
Moore, Toby	TobyMoore@gswater.com
MWDProgram	MWDProgram@sdca.org
Nadia Aguirre	naguirre@tvmwd.com
Natalie Avila	navila@cityofchino.org
Natalie Costaglio	natalie.costaglio@mcmcnnet.net
Nathan deBoom	n8deboom@gmail.com
Neetu Gupta	ngupta@ieua.org
Nichole Horton	Nichole.Horton@pomona.gov
Nick Jacobs	njacobs@somachlaw.com
Nicole deMoet	ndemoet@uplandca.gov
Nicole Escalante	NEscalante@ontarioca.gov
Noah Golden-Krasner	Noah.goldenkrasner@doj.ca.gov
Norberto Ferreira	nferreira@uplandca.gov
Paul Hofer	farmwatchtoo@aol.com
Paul Hofer	farmerhofer@aol.com

Paul S. Leon  
Pete Vicario  
Peter Hettinga  
Peter Rogers  
Rebekah Walker  
Richard Anderson  
Richard Rees  
Rickey S. Manbahal  
Robert DeLoach  
Robert E. Donlan  
Robert Neufeld  
Robert S. (RobertS@cbwcd.org)  
Robert Wagner  
Ron Craig  
Ron LaBrucherie, Jr.  
Ronald C. Pietersma  
Ruben Llamas  
Ruby Favela  
Ryan Shaw  
Sam Nelson  
Sam Rubenstein  
Sandra S. Rose  
Scott Burton  
Scott Slater  
Seth J. Zielke  
Shawnda M. Grady  
Shivaji Deshmukh  
Sonya Barber  
Sonya Zite  
SRamirez@kmtg.com  
Stephanie Reimer  
Stephen Deitsch  
Stephen Parker - sparker@uplandca.gov

Steve Kennedy  
Steve M. Anderson  
Steve Nix  
Steve Smith  
Steven Andrews Engineering  
Steven J. Elie  
Steven J. Elie  
Steven Popelar  
Steven Raughley  
Susan Palmer  
Sylvie Lee  
Tammi Ford  
Tariq Awan  
Taya Victorino  
Teri Layton  
Terri Whitman  
Terry Catlin  
Terry Watkins  
Thomas S. Bunn

pleon@ontarioca.gov  
Pvicario@cityofchino.org  
peterhettinga@yahoo.com  
progers@chinohills.org  
rwalker@jcsd.us  
horsfly1@yahoo.com  
richard.rees@wsp.com  
smanbahal@wwd.org  
robertadeloach1@gmail.com  
red@eslawfirm.com  
robneu1@yahoo.com  
RobertS@cbwcd.org  
rwagner@wbecorp.com  
Rcraig21@icloud.com  
ronLaBrucherie@gmail.com  
rcpietersma@aol.com  
rllamas71@yahoo.com  
rfavela@cbwm.org  
RShaw@wmwd.com  
snelson@ci.norco.ca.us  
srubenstein@wpcarey.com  
directorrose@mvwd.org  
sburton@ontarioca.gov  
sslater@bhfs.com  
sjzielke@fontanawater.com  
sgrady@eslawfirm.com  
sdeshmukh@ieua.org  
sbarber@ci.upland.ca.us  
szite@wmwd.com  
SRamirez@kmtg.com  
SReimer@mvwd.org  
stephen.deitsch@bbklaw.com

sparker@uplandca.gov  
skennedy@bmklawplc.com  
steve.anderson@bbklaw.com  
snix@ci.upland.ca.us  
ssmith@ieua.org  
sandrews@sandrewsengineering.com  
s.elie@mpglaw.com  
selie@ieua.org  
spopelar@jcsd.us  
Steven.Raughley@isd.sbcounty.gov  
spalmer@kidmanlaw.com  
slee@tvmwd.com  
tford@wmwd.com  
Tariq.Awan@cdcr.ca.gov  
tayav@cvwdwater.com  
tlayton@sawaterco.com  
TWhitman@kmtg.com  
tcatlin@wfajpa.org  
Twatkins@geoscience-water.com  
tombunn@lagerlof.com



Tim Barr	tbarr@wmwd.com
Tim Moore	tmoore@westyost.com
Timothy Ryan	tjryan@sgvwater.com
Toby Moore	toby.moore@gswater.com
Todd M. Corbin (tcorbin@cbwm.org)	tcorbin@cbwm.org
Tom Barnes	tbarnes@esassoc.com
Tom Bunn	TomBunn@Lagerlof.com
Tom Cruikshank	tcruikshank@linklogistics.com
Tom Dodson (tda@tdaenv.com)	tda@tdaenv.com
Tom Harder	tharder@thomashardercompany.com
Tom O'Neill	toneill@chinodesalter.org
Toni Medell	mmedel@mbakerintl.com
Tony Long	tlong@angelica.com
Toyasha Sebbag	tsebbag@cbwcd.org
Tracy J. Egoscue	tracy@egoscuelaw.com
Trevor Leja	Trevor.Leja@cao.sbcounty.gov
Veva Weamer	vweamer@westyost.com
Victor Preciado	Victor_Preciado@ci.pomona.ca.us
Vivian Castro	vcastro@cityofchino.org
Wade Fultz	Wade.Fultz@cmc.com
WestWater Research, LLC	research@waterexchange.com
William Brunick	bbrunick@bmklawplc.com
William McDonnell	wmcdonnell@ieua.org
William Urena	wurena@emeraldus.com